

AGENDA FOR BOARD OF DIRECTORS
AUBURN SCHOOL DISTRICT NO. 408
Monday, December 22, 2014

- I. TIME AND PLACE
 - 1. 7 p.m. at the James P. Fugate Administration Building
- II. ROLL CALL
 - 1. Roll call of board members
- III. PLEDGE OF ALLEGIANCE
- IV. AUDIENCE PARTICIPATION
 - 1. Written communications
 - 2. Scheduled communications
 - 3. Unscheduled communications
 - 4. Community groups and organizations
- V. LEGISLATIVE UPDATE
- VI. STUDENT PARTICIPATION
 - 1. Requests for travel
- VII. SCHOOL PROGRAMS AND STUDENT ACHIEVEMENT
 - 1. 2013-16 District Strategic Plan progress report
- VIII. PERSONNEL
 - 1. Certificated and classified personnel report
 - 2. Out-of-endorsement assignment
 - 3. Requests for travel
- IX. BUILDING PROGRAM
 - 1. Authorization to call for bids
 - 2. Authorization to call for bids
 - 3. Authorization to call for bids
 - 4. Authorization to call for bids
 - 5. Auburn High School modernization and reconstruction project
 - 6. Auburn High School work in progress
- X. FINANCE
 - 1. Vouchers
 - 2. Financial statements

XI. DIRECTORS

1. Approval of minutes
2. First reading of policy
3. Resolution No. 1201
4. Subcommittees of the board
5. Discussion
6. Executive session

LEGISLATIVE UPDATE

The board will discuss legislative items.

STUDENT PARTICIPATION

1. Requests for Travel

- a. Fifteen Auburn High School students request permission to travel to Berkley, California, Friday to Monday, February 13-16, 2015. The purpose of the trip is to compete in the debate tournament. Lodging will be at the Double-Tree hotel, meals will be at local restaurants and travel will be by airplane. Travel expenses will be paid by ASB funds and students will help pay for their own meals and share lodging expenses. Donna Bowler and James Cleary, Auburn High School language arts teachers, request permission to accompany the students. Substitutes will be needed for one day.
- b. Forty-two Auburn Mountainview High School students request permission to travel to Coeur d'Alene, Idaho, Friday to Sunday, May 29-31, 2015. The purpose of the trip is to compete in the "Music in the Parks" choir competition. Lodging will be at the Days Inn, meals will be at local restaurants, and travel will be by charter bus. All expenses will be paid by students and staff. Karen Caldwell, Auburn Mountainview High School teacher, requests permission to accompany the students. A substitute will be needed for one day.

Phil Caldwell, Willie Duhan and Katie Burke, parent chaperones, request permission to accompany the students.

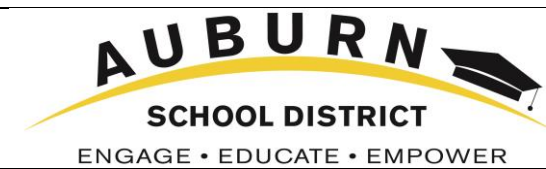
Recommendation:

That the above trips be approved as requested.

SCHOOL PROGRAMS AND STUDENT ACHIEVEMENT

1. 2013-16 District Strategic Plan Progress Report

Rodney Luke, associate superintendent of technology & career and college readiness, will present the 2013-16 District Strategic Plan progress report for the period of September - November, 2014, and answer questions from the board. This presentation aligns with the Auburn School Board 2014-15 Stated District Goals, Standard II ("set and communicate high expectations for student learning with clear goals and plans for meeting those expectations and celebrate success"); Goal 1 ("monitor the progress for the Auburn School District Strategic Improvement Plan II").



The Auburn School District aspires to be a world-class education system preparing all students to be globally competitive for career, for college, and for life in the twenty-first century.

2013 – 2016 Strategic Plan Implementation V. 2.0

Reporting for 2014-2015 School Year: Fall (F) September – November Winter (W) December – February Spring (S) March – June

- Begin
- In Progress
- Completed

Goal 1 Student Achievement:
All staff in the Auburn School District provide support, leadership, and guidance to ensure each student meets or exceeds state and district standards, graduates on time, and is prepared for career and college.

Objective 1 Professional Learning Communities: Professional Learning Communities will be employed with integrity to plan, monitor, and adjust instruction to impact student learning.	Evidence: Continue to implement Professional Learning Communities that exhibit the three core principles: (1) Culture of collaboration (collective purpose); (2) Ensure every student is learning (four essential questions); (3) Focus on results (using data).
---	--

Strategies:		Evidence:		F	W	S	Comments:
1	Professional Learning Community (PLC) teams participate in professional development to strengthen the effectiveness of professional learning communities, including norms, standards, learning targets, common assessments, data analysis, intervention, and accelerated learning.	A. Student Learning Department continues to provide professional development for teachers new to the district and for schools or PLC teams in need of additional support.					(F) More than ninety new teachers participated in the August 2014 new teacher orientation professional development program. Learning included components of PLC including norms of collaboration, standards-based teaching and learning, and reporting. All K-12 teachers participated in the August 2014 district in-service day focused on Common Core State Standards for Mathematics and English Language Arts, Next Generation Science Standards, Social Studies, Arts and World Languages.
	Professional Learning Communities focus on the four essential questions.	A. PLC teams continue to engage all colleagues in exploration of the four essential questions to assure instruction and assessments are aligned to standards.					(F) PLCs were launched on Monday, October 6 and have met seven times through the end of November. Part of PLC time focuses on the review of data at all levels. Data includes formative, benchmark, interim and summative assessments including state level summative assessment data from spring of 2014. Content programs (K-8) have held PLCs in which Common Core State Standards, standard based teaching and learning, data analysis, common assessments and intervention were discussed, reviewed and/or created. Common weekly problem solving tasks and unit assessments have been delivered and scored for mathematics at grades 3-8. Performance tasks and close reading assessments have been implemented at grades 3-8 for English Language Arts. Middle and high school ELL teachers meet monthly for cross-district PLCs and common assessments have been created and administered to students. Career and Technical Education teacher PLCs focus on data received from common assessments to respond to student learning needs. The Student Special Services Leadership team attends weekly PLCs in various K-12 classrooms and schools. Each month Adaptive Behavior teachers from across the district participate in a collaborative PLC. Educational Staff Associates (ESA) participate in both school level and content specific PLCs.
2		B. Each year one third of schools participate in scheduled visitations to the school board to report progress and effectiveness of professional learning community teams.					(F) Auburn Senior High School presented PLC October 2014. West Auburn High School Presented PLC November 2014.

Strategies:		Evidence:	F	W	S	Comments:
3	Instruction is aligned to state, national common core and industry standards.	A. Standards are unpacked in to curriculum frameworks for all content areas and scheduled into instructional scope and sequence. Mathematics and English Language Arts to be completed by fall of 2014.				(F) At Grades K-8 the common core standards for English Language Arts and mathematics have been unpacked into curriculum frameworks and scheduled into instructional scope and sequence. Forty-one language arts teachers (grades 6-12) participated in twelve hours of professional development focused on the common core aligned College Board Springboard English Language Arts program. All high school language arts teachers (grades 9-12) participated in six hours of high leveraged “close reading” strategies professional development. All special education teachers and ESA staff participated in seven hours of professional development sponsored by OSPI and WEA on the Common Core Standards and Special Education. WA-AIM is the new state alternative assessment. Structured Learning Center teachers have received training to understand how the common core standards have been scaffold to provide access for all students. Student Special Services Leadership team continues to develop and implement three year plans for all programs supported by special education administrators. A steering committee is being developed to provide input for ongoing professional development. High school teachers developed a common scope and sequence, practice work and common assessments aligned to common core standards for Algebra and Geometry. Career and Technical Education programs (Agriculture, Jewelry, Graphic Design, Visual Communications, Interactive Media, and Drawing) are reviewing and revising curriculum frameworks to align with common core standards. A high school staff leadership team has been organized to develop a plan for transitioning to the Next Generation Science Standards.
		B. A multi-year schedule for review and adoption of instructional materials for all content areas will be developed.				(F) Discussions about the timeline for selection criteria and priority for K-8 curriculum adoptions began this fall. A draft plan will be available in March of 2015. Guidelines and filters for curriculum adoptions were drafted for high school programs. The process will be deliberate and coordinate with the timing of the resources related to meeting the requirements of the CCSS and SBAC.
4	Student progress is monitored through common assessments.	A. Data from common formative, benchmark, interim, and summative assessments is used to monitor student progress and adjust instruction.				(F) Middle school special education teachers participate in the middle school content team lead meetings to gain knowledge on assessments being used and to ensure accessibility for all students.
		B. A user-friendly data system is available to provide real-time information and dashboards for teachers and administrators to monitor student learning progress.				(F) “My School Data” is a new application recently developed by Washington School Information Processing Cooperative (WSIPC) that seamlessly integrates with the Skyward Student System. My School Data provides quick secure access to student data including assessment information in an easy-to-use dashboard format. Additionally My School Data incorporates robust early warning indicator systems that will flag students early-on who are academically at-risk. A comprehensive and tiered My School Data field study/pilot is being conducted with administrators, principals and teachers. “Review 360” is being implemented in the Adaptive Behavior programs to collect and review behavioral related data. “Unique Learning” curriculum utilized by Structured Learning Center teachers has an ongoing data collection and monitoring component built into the program. Behavior Leadership Team is working with schools on screening tools and data collection methods to monitor school-wide Positive Behavior Supports. Career Cruising was implemented this November. Career Cruising is a web-based career interest survey system applicable for elementary through high school and has the potential to house the high school and beyond plan and support the link between course scheduling and college and career readiness.
		C. ReadStep, PSAT, and SAT data used by PLC teams to monitor college and career readiness grades 8-12.				(F) In October 2014 students in grades 8-12 participated in during-the-school-day College Board assessments. 1042 eighth grade students completed the ReadStep; 2,857 ninth, tenth and eleventh grade students completed the PSAT; and 865 twelfth grade students completed the SAT. This October the 2013 school year SAT data/results was provided to administrators of each high school for their review and distribution to staff for use during PLCs.

Strategies:		Evidence:	F	W	S	Comments:
5	Interventions and strategies are implemented to address students below standard.	A. All schools include in their master schedules time and support for students who are below standard.				(F) In October Learning Assistance Program (LAP) and Title I extended-day support for mathematics was implemented (middle and high schools) to provide additional instruction and assistance for students below standard. Twenty-first Century Grant funds provide after school intervention at Washington Elementary and Cascade Middle School. RTTT Deep Dive 3 funds provided extended learning for students at Dick Scobee Elementary. At Auburn High School two study-skills classes have been created. Twenty Native American students identified as needing daily support are enrolled in the study-skills classes. At Auburn High School the Native American Program is offering an extended-day program to provide students with additional support in mathematics, homework, access to computers for use with IXL mathematics, APEX on-line learning and essay writing. Snacks and transportation are provided for students in this Native American extended-day program.
	Enrichment and accelerated programs are implemented to extend learning for students beyond standard.	A. Highly Capable Program is in compliance with legislative revisions to Chapter 28A.185 RCW and Washington State Admin Code WAC 392-170 requiring all districts to provide basic education services that meet the educational needs of the district's most highly capable students K-12. B. Focus of honors courses at the middle and high school is pre-advanced placement to align with college and career readiness.				(F) All Highly Capable students K-12 have been coded into Skyward and a report has been created for data mining purposes. Students are receiving academic services through acceleration at their home school. All schools in the district are providing highly capable academic services. Materials to support the social and emotional needs of highly capable students have been purchased and training will be provided for school counselors. (F) To prepare students for Advanced Placement (AP) coursework all four middle schools (grades 6, 7 and 8) are implementing the College Board "Springboard pre-advanced placement English Language Arts program" and all four high schools are implementing common core standards aligned lessons and units in pre-advanced placement English Language Arts.

Goal 1 Student Achievement: All staff in the Auburn School District provide support, leadership, and guidance to ensure each student meets or exceeds state and district standards, graduates on time, and is prepared for career and college.						
Objective 2 School Improvement Plans: All school improvement plans will align with the district strategic plan and the nine characteristics of high performing schools.				Evidence: School Improvement Planning (SIP) is a three-year cycle with 1/3 of the district schools participating in a full revision; 1/3 participating in Year 2 SIP support; and 1/3 presenting progress and achievement to the school board.		
Strategies:		Evidence:		F	W	S Comments:
1	School improvement teams utilize the current adopted school improvement template and rubric.	A. All schools use the adopted school improvement rubric and template to complete and submit fully-revised school improvement plans.				(F) “Needs Assessment” meetings were conducted by the Department of Student Learning with Lakeland Hills, Lea Hill and Lakeview Elementary. The adopted school improvement rubric was used to provide feedback for their school’s fully revised SIP.
		B. Annually 1/3 of the district schools complete the fully-revised school improvement plan.				(F) Pioneer, Chinook, Gildo Rey and Auburn High School are fully revising their school improvement plans this school year. All four middle level schools will continue to monitor their school improvement plans during the monthly Middle School subcommittee meetings. West Auburn High School and Auburn Riverside High School are revising their SIP plans to integrate their transition to Title 1 schools.
		C. Annually 1/3 of the district schools present school improvement progress and outcomes during a scheduled school board meeting.				(F) Hazelwood Elementary October 2014. Arthur Jacobsen Elementary November 2014.
2	Schools include all staff to annually revise improvement plans to address the most recent student achievement data, perceptual data, and the nine characteristics of high performing schools.	A. Annually each principal and their school improvement team participate in a scheduled needs assessment and data review. Academic progress data will be provided for updating school improvement plan.				(F) The principal and school improvement team at all twenty-two schools are scheduled to complete a comprehensive data driven needs assessment. Meetings with the schools began in October.
3	Schools communicate the goals and intended outcomes of the school improvement plan to all stakeholders.	A. Principals share school improvement accomplishments at open house and other parent and community events.				(F) All twenty-two schools held open house this fall. Principals, district administrators and teachers shared school improvement and district strategic plan accomplishments and challenges with the parents in attendance.
4	School-level professional development addresses areas of strengths and obstacles as identified in the school’s improvement plan.	A. All principals submit a (PDTIP) professional development plan aligned to school improvement to student learning department in October and in June.				(F) In October a professional development and technology implementation plan (PDTIP) for the 2014-2015 school year was received from the principal at each of the twenty-two schools.

Goal 1 Student Achievement:

All staff in the Auburn School District provide support, leadership, and guidance to ensure each student meets or exceeds state and district standards, graduates on time, and is prepared for career and college.

Objective 3 Instructional Framework:

The Auburn School District will utilize the Center for Educational Leadership’s Five Dimensions of Teaching (CEL 5D) as the Instructional Framework.

Evidence:

Comprehensive and on-going professional development is provided to all classroom teachers and principals to ensure instruction and classroom practice aligns with the five dimensions of teaching as outlined in the district adopted CEL 5D instructional framework.

Strategies:		Evidence:	F	W	S	Comments:
1	All administrators and teachers engage in professional development on the Instructional Framework.	A. All school principals and assistant principals will complete stage 1 and stage 2 instructional framework training during the 2013-2014 school year.				(F) New Administrators have completed Stage 1 training and have participated in eight hours out of a total twenty hours of Stage 2 training. The remaining twelve hours of Stage 2 training are scheduled to take place in January, February and March.
		B. All classroom teachers will complete instructional framework training prior to full implementation of the new teacher evaluation system in 2016.				(F) In the summer of 2014 two hundred ninety-eight new and continuing contract teachers received fourteen hours of training on the CEL 5D+ Instructional Framework and evaluation and are invited to participate in monthly professional development focused on the CEL 5D+ Instructional Framework.
2	Teachers and administrators monitor student learning and adjust instruction to ensure achievement of standard.	A. Standards are reflected in learning targets, lesson design, common assessments, student work, and reporting of student progress.				(F) K-12 instruction is transitioning standards-based teaching, learning and reporting to be aligned to the common core standards. Smarter Balanced Assessment Consortium (SBAC) test item specifications were distributed to middle and high school math departments as resources in lesson plan design and to align assessments to common core math standards. Standards-based teaching and learning for mathematics includes standards, learning targets, multiple practice opportunities and the incorporation of benchmark assessments to measure skills attained. High school science teachers are developing scope and sequence, lessons and assessments aligned to the Next Generation Science Standards. Common grading and reporting principles have been implemented at all four high schools. High school standards-based leadership teams are organizing to support standards-based teaching and learning. High school English Language Arts common core curriculum pilots identify the standards and learning targets for each lesson.
		B. The reporting features of the district electronic gradebook are aligned to standards-based teaching & learning and clearly communicate academic progress to students, parents, teachers, and administrators.				(F) “Categories as Standards” in Skyward Grade Book system was implemented for high school teachers this fall. Detailed written documentation on how to use the grade book to report student progress to meeting standards was provided. If requested on-site teacher training was scheduled and provided for teachers at each high school. Early Childhood Education (ECE) teachers are linking pre-k and kindergarten standards to develop common expectations across the district.
		C. Student achievement dashboards are utilized by the school board to monitor progress for career and college readiness (including literacy, mathematics and science; advanced course work: College Board assessments; and credits earned toward graduation).				(F) Dashboards for DIBELS, MAPS, Honors Courses, Advanced Placement, Advanced Career and Technical Education and credits earned toward graduation continue to be utilized and presented to the school board. The special student services “Transition Learning Community” is utilizing the high school programs-of-study documents to ensure that student transition plans include a course-of-study aligned to ensure career and college readiness.

Strategies:		Evidence:	F	W	S	Comments:
3	Teachers, administrators, and parents engage in professional development for standards-based teaching and learning.	A. Parents K-12 are provided multiple opportunities to engage with and become informed about standards-based teaching, learning and reporting.				(F) Standards-based teaching, learning and reporting were topics shared with parents during fall open house and November parent teacher conferences. K-8 principals and staff were provided with resources that support parents in understanding our scoring criteria and the implications of the rigor of CCSS on students' grades. Resources include email messaging with transition examples, timelines and guiding questions to support teachers in their planning for parent teacher conference and a parent friendly PowerPoint presentation with a voice-over describing standards-based teaching and learning and the scoring criteria.
		B. Targeted professional development is provided to support teachers with instructional strategies to implement standards and assessments.				(F) Model lessons in mathematics were demonstrated in K-8 classrooms as professional development tied to instruction aligned to common core. High school standards-based teaching and learning leadership teams are developing and sharing best practice and strategies with their colleagues for use in classroom instruction and PLC discussions. Multiple Chrome Book carts have been deployed to English Language Arts classrooms at each of the four high schools to support common core curriculum. Teachers are provided training to use Chrome Book Carts with students to utilize cloud-based computing and storage, access on-line curriculum and individualize learning aligned to the common core. Teams of central office administrators and teachers K-12 are collaborating to develop web-based instructional materials aligned to Common Core Math and English Language Arts. Twenty-two middle school teachers participated in eighteen hours of Sheltered Instruction Observation Protocol (SIOP) training and SIOP booster trainings. SIOP teacher coaches and district administrators attended the National SIOP conference.
		C. A menu of professional development opportunities supporting transition, alignment and implementation of common core is available.				(F) A continuum of targeted on-going professional development opportunities were offered by the district and individual schools supporting the transition to common core standards. Topics included distributed leadership, implementation of technology, standards-based teaching and learning, IEP's aligned to common core, using data to target instruction, aligning common assessments and the Teacher Principal Evaluation Program (TPEP).

Goal 1 Student Achievement: All staff in the Auburn School District provide support, leadership, and guidance to ensure each student meets or exceeds state and district standards, graduates on time, and is prepared for career and college.						
Objective 4 Technology: Technology will be integral to administration and teaching and learning to prepare all students for career, college, and life beyond high school.			Evidence: A district-wide technology plan will be developed, adopted and widely communicated. The plan is based on recommendations of the 2013 technology ad-hoc committee and includes student voice. The plan will outline the vision, goals, and timelines for deployments of infrastructure, hardware, educational software, and professional development.			
Strategies:		Evidence:	F	W	S	Comments:
1	Staff, teachers, and administrators use technology to perform their job duties.	A. Technology Ad-Hoc Committee is organized to develop recommendations for implementation of technology throughout the next six years.				(F) Technology Levy planning for Year 1 device and infrastructure deployment continues to be refined using current enrollment and curriculum information. Summary plan shared with cabinet, school board, principals, instructional technology support specialists, building technology coordinators, ATLA and librarians.
		B. Plan is developed to provide sustainable broadband capacity which addresses the needs of a world-class education system.				(F) Fiber optics broadband to every ASD facility was completed November 2014. Review is underway to upgrade core broadband access in anticipation of increased bandwidth needed for implementing targeted 1:1 technology.
		C. Managed technology services from value/benefit (return on investment) perspective are investigated.				(F) Network Address Translation (NAT) conversion is 90% complete, substantial completion by end of December 2014. Utilized vendor turnkey services as much as possible for the majority of the over 1500 Chromebooks currently deployed.
		D. Infrastructure supports flexible mobile technology environment using industry standard proven performance technologies.				(F) At least one wireless access point for mobile device access is installed in every school building. District mobile Chromebooks and laptops support mobility between the twenty-two schools.
		E. Infrastructure review cycle is implemented to upgrade, replace, and expand capacity for a targeted program specific 1:1 access device plan.				(F) Budget planning in progress for expansion of infrastructure required for targeted 1:1 technology and high density wireless deployment and installation. Infrastructure inventory has been completed with an estimated replacement cycle for critical infrastructure items.
		F. Infrastructure supports flexible use of free/open resource software or services.				(F) Implemented district Google accounts for all students as of September 2014. Implemented synchronized passwords for all accounts (student and staff) as of November 2014.
		G. Infrastructure supports varied learning and professional development structures (virtual classrooms, tutoring, webinar, etc).				(F) Continued support for online learning resources through growth of digital tools on district web site and the ASD Google k-12 common core curriculum web site.
		H. A support model is developed to implement and maintain accessibility, reliability, and effective use of expanded technology.				(F) Planning in progress for expansion of technology staffing in support of targeted 1:1. In house and formalized training of IT staff related to various mobile devices, developing internal (IT staff) knowledge of hardware and software. IT staff are learning new troubleshooting strategies and repair procedures for mobile devices.
		I. Technology is used to facilitate communication and collaborative learning by parents, students, staff, and administrators.				(F) School Messenger, Skyward and Constant Contact are used at the district and school level to engage and communicate with the community. School Messenger calls made in multiple relevant languages on a number of topics (e.g. district and school activities).
		J. Digital tools are provided to teachers to utilize Learning Management Systems (LMS) and electronic educational resources to organize and manage their coursework and student data.				(F) Pilot of WSIPC “My School Data and Early Warning Indicator System” are in progress. Pilot teachers and principals are providing feedback to WSIPC to identify improvements needed for effectively reporting student progress toward standards and graduation.
		K. A multi-year incremental roll-out plan for targeted program specific 1:1 access is developed to include Bring Your Own Device (BYOD) and district supplied devices.				(F) District supplied targeted 1:1 device plan template has been drawn up with refinements being made in support of program-specific needs. BYOD pilot in progress at Auburn High School.
		L. Teachers utilize technology and resources to implement goals of the high-yield strategies.				(F) Race To The Top Project 4 – Middle School Math (1:1 with Google Chrome Books). Teachers are utilizing the technology in order to: provide immediate feedback by using digital assessments, provide personalized learning environments and to accelerate learning.

Strategies:		Evidence:	F	W	S	Comments:
2	Student use of technology is accessible and evident in the classroom.	A. A plan for long-term hybrid technology devices to include wired and wireless access in schools is developed.				(F) Through regular building technology planning process, identification of wired/wireless devices and continued support of regular school business is ongoing. Through this planning cycle areas to remain wired will be identified and a process for review will continue throughout the school year.
		B. All students k-12 are provided with a comprehensive, embedded digital literacy and citizenship curriculum.				(F) Digital Literacy and citizenship curriculum is being developed and was piloted with building technology coordinators, instructional technology support specialists and librarians. Several digital literacy resources are available on the ASD Google K-12 curriculum site for teachers to access and use in the classroom with students.
		C. Digital devices are provided for students to enhance high-yield strategies in the classroom.				(F) Chrome Book carts and other technology tools are being deployed throughout this year in support of readiness to benefit with the use of technology for instruction and to support the piloting of the Smarter Balanced electronic assessment system this spring.
		D. Students, teachers, and parents have 24/7 access to electronic resources for differentiating learning.				(F) Teachers are accessing electronic resources via the ASD Google K-12 curriculum website in Math and English Language Arts. Teachers, students and parents have access to cloud-based resources such as Google Apps, IXL Mathematics, Khan Academy and Springboard Online (English Language Arts).
		E. Access to content at home or in the community through a web portal or similar system is provided.				(F) Additional digital tools are being added to the ASD GoogleK-12 curriculum web site. This website, available anywhere in the world, continues to grow and content added that is aligned with academic goals for teachers and students. Current efforts focus on digital content for English Language and Arts, providing a “one stop shop” for digital curriculum for teachers. Unified logins between district network access accounts and Google accounts allows for a seamless transition between district and cloud-based resources.
		F. Explore methods to assist economically disadvantaged students to gain access to digital technology and network resources.				(F) Materials were distributed to parents during the October 2014 middle school “Reaching Out Fair” regarding how to access low cost broadband, digital technology and network resources. Google Apps for Education provide all students with world class collaboration, applications and technology.
3	Staff, teachers and administrators participate in professional development to become proficient in the use of technology in their job assignment.	A. A district-wide plan is developed to purchase, distribute and provide staff development in use of interactive instructional technology tools that can be utilized by staff to work toward the goals of the High-Yield Strategies. The plan allows time for teachers to organize, practice and implement the conversion to a technology-based classroom.				(F) Principals were provided with Chrome Books and are receiving training during their principal cohort meetings to build knowledge and capacity to accelerate technology adoption at the classroom level. Continued training for Auburn Teacher Leadership Academy (ATLA) Cohort 5 teachers using Chrome Books to support teacher leadership in instructional technology is being provided.
		B. Ongoing professional development is provided for staff in instructional technologies with an emphasis on high-yield strategies.				(F) Each school was provided with one Instructional Technology Support Specialist (ITSS) who will provide consistent and ongoing professional development on integrating high yield instructional strategies with technology. The focus for the Auburn Teacher Leadership Academy is to integrate technology and digital tools. Each principal, ATLA teacher, Building Technology Coordinator and Instructional Technology Support Specialist received a Chrome Book, training and ongoing support.

Goal 1 Student Achievement: All staff in the Auburn School District provide support, leadership, and guidance to ensure each student meets or exceeds state and district standards, graduates on time, and is prepared for career and college.						
Objective 5 High School Graduation: The Auburn School District will increase and continue to exceed the State of Washington’s on-time and extended high school graduation rates.				Evidence: By 2016-2017 school year all Auburn School District High Schools will meet or exceed the Road-Map Project 2020 on-time high school graduation goal of 90%.		
Strategies:		Evidence:		F	W	S
1	All schools increase community, staff, parent, and student understanding of the learning standards, required assessments, and graduation requirements.	A. All schools use newsletters, websites, open house, conferences, and other school events to communicate with staff, parents and students.				(F) In September students and parents received communication regarding state assessment results and their progress toward meeting standard and graduation requirements. In fall of 2014 students and parents received communication regarding state assessment results, their progress toward meeting standard (K-12) and graduation requirements. The Native American Education Program (NAEP) Coordinator presented “Partnering for Student Success” at the Reaching Out Fair. This presentation was also shared at an October gathering of Native American students at Olympic Middle School.
		B. Refine high school annual performance reports/school profile to include college and career readiness statistics.				(F) Coming Attraction 2014-2015
2	The Auburn School District administrators, principals, and teachers support student transitions from kindergarten through grade 12 by monitoring and intervening with students exhibiting at-risk indicators including attendance, academic, health, social, economic, and discipline.	A. Develop an Early Warning Indicator System (EWIS) to identify students early in their educational pathway who are not on target for graduation or who are at risk of dropping out of school.				(F) The ASD Early Warning Indicator System committee is exploring and planning to pilot the EWIS that is integrated within the WSIPC “My School Data” Skyward application.
3	Auburn School District and schools increase accelerated program offerings K-12 such as enrichment, advanced placement (AP), career and technical education (CTE), science, technology, engineering and mathematics (STEM), and fine arts.	A. Development of the high school and beyond plan to begin at the middle school.				(F) Career Cruising was deployed in November and will be used for storing, reviewing and revising the state-required high school and beyond plan. Career Cruising is available at the middle school and students will use this tool to plan for high school and beyond course taking.
		B. Increase offerings of STEM (science, technology, engineering, and mathematics) and Career and Technical programs at the middle schools.				(F) STEM Computer Science is offered at Rainier Middle School this school year. STEM Construction program has been reestablished at Cascade Middle School. A curriculum framework for STEM Computer Science and STEM Kitchen Science have been developed and submitted to OSPI.
		C. Expand offerings of high school credit bearing courses for students in 7th and 8 th grade at all middle schools.				(F) This fall Advanced Algebra Trig was implemented as a high school course offered at the middle school.
		D. During the school day College Board assessments will be offered to all students in grade 8, 9, 10, and 11.				(F) The College Board Assessments ReadStep grade 8, PSAT grades 9, 10,& 11, and SAT grade 12 were administered in October during the school day. All four middle schools and all four high schools participated.
		E. Expand Pre-Advanced Placement and Advanced Placement course offerings including courses that are Advanced Placement Career and Technical.				(F) Twenty High School students participated in the 2 nd annual Advanced Placement Summer Bridge event over three days in August 2014 to prepare for their first AP course taking. In partnership with Equal Opportunity Schools (EOS) the ASD expanded the work to close Equity Gaps in accelerated programs to begin at the middle school level. In partnership with the Auburn School District, Equal Opportunity Schools developed a staff and a seventh grade student survey to foster accelerated learning opportunities and create a clear pathway to college and career readiness. AP Computer Science and AP Psychology courses have been expanded to Auburn High School. AP Comparative Government and Politics is being piloted this school year. In the fall of 2014 there are more than 2,050 course enrollments in advanced placement courses at the high schools. One hundred and eighty-two students have been identified by the College Board as AP Scholars. The College Board reported that 519 Auburn School District students earned a 3 or higher on their AP test in the spring of 2014.

Strategies:		Evidence:	F	W	S	Comments:
3	Auburn School District and schools increase accelerated program offerings K-12 such as enrichment, advanced placement (AP), career and technical education (CTE), science, technology, engineering and mathematics (STEM), and fine arts	F. Curriculum frameworks developed for career and technical (CTE) courses whose content in STEM (science, technology, engineering and mathematics) is equivalent to high school graduation requirements.				(F) Vertical meetings between middle and high school STEM Robotics teachers began this fall to develop curriculum frameworks aligned to high school equivalent graduation requirements.
		G. Increase opportunities for career and technical (program students to earn industry-recognized certification.				(F) No updates at this time
4	Schools communicate with the student who has dropped out of school and their parent in an effort to retrieve or connect the student to additional resources, including principals, counselors, and/or outside agencies working with the district.	A. Professional development opportunities are planned and delivered to staff to address dropout prevention, intervention, and retrieval.				(F) Student Special Services Transition Learning Community provided additional teacher access to resources for increasing student engagement and decreasing drop-out rates.
		B. Continue emphasis and successes of the Auburn Will Graduate program.				(F) Continued partnership between West Auburn High School and Graduation Alliance ensures students have appropriate access to the Auburn Will Graduate Program.
5	District and school resources are made available to address students identified at risk of failure or dropping out of school.	A. Academic progress reports, updates, and dash boards are regularly scheduled for presentation to the school board.				(F) Updates on the transition to Common Core State Standards and SBAC were provided to the school Board in October.
		B. Full-day or extended kindergarten is offered to all students at all elementary schools.				(F) All elementary schools now have full day kindergarten or extended day kindergarten in place.
		C. In-house and/or community credit alternatives available to continue learning for students who have been suspended, including on-line learning.				(F) Interim online learning program is available as an educational option for students on emergency expulsion or long-term suspension. Secondary schools utilize in-school and non-school-day (after school and/or Saturday school) disciplinary settings to minimize impact of classroom removals.
		D. Expand credit recovery options to minimize course failures and increase on-time graduation and extended graduation rates.				(F) Native American Education Program (NAEP) students were interviewed by the Migrant Student Data Recruitment and Support office. Once qualified for the program students can take a course through the PASS program for credit retrieval. Students enrolled in the program have opportunity to take on-line APEX Learning courses for credit retrieval.

Goal 2 Community Engagement: All staff in the Auburn School District are accountable for engaging its diverse community as partners to support and sustain a world-class education system.						
Objective - Cultural Awareness and Customer Service: All Auburn School District employees will engage patrons through cultural awareness and a respectful customer service environment.			Evidence: Using the Center for Educational Effectiveness (CEE) Parent Perception Survey (Parent and Community Involvement and High Levels of Collaboration & Communication sections) the, district attains a 90% positive rating with the combined totals of the “Almost Always” and “Often True” responses; CEE surveys including parent survey will be conducted every other year beginning in the fall of 2014.			
Strategies:		Evidence:	F	W	S	Comments:
1	All school district employees promote positive and respectful interpersonal relationships with all patrons of the school district.	A. Parent perceptual survey data continues to monitor progress toward positive engagement in schools and district.				(F) The Center for Educational Effectiveness Surveys for staff, student and parent were implemented this fall at all twenty-two schools. Data from these surveys will be available in January 2015. The School Board conditions and belief perceptual surveys were conducted in October 2014 with staff district-wide.
		B. Throughout each school year professional development series is offered to staff to increase cultural awareness and cultural proficiency in a customer service environment.				(F) Family Engagement Coordinator presented family engagement information to building administrators during the September and October principal cadre meetings. The District Family Engagement office has provided Effective Parent Engagement training to all new teachers hired during the new teacher orientation and also presented to several school staff during building retreats. The coordinator is also working very closely with several schools to increase their parent engagement capacity and supported ten school events held at Dick Scobee, Gildo Rey, Mount Baker Middle School, Auburn Riverside High School, Auburn High School, West Auburn High School and Student Special Services. During the past summer (in partnership with the Road Map Project) five ASD administrators and a para-educator attended a Parent Engagement class at the Harvard Graduate School of Education.
		C. Parent and community outreach program implemented to communicate resources available for parents and students, academic learning standards, graduation requirements, and career and college readiness.				(F) More than 300 middle school students and their parents participated in the 16 th Annual Reaching Out Fair with more than forty vendors that represented community colleges, universities, high school programs and community resources. Family Engagement coordinators provided resources through a booth and in an informational breakout session. The Native American Education Program hosts a monthly parent, guardian and community meeting. An active Native American Parent Advisory committee was established this fall.
		D. Parent leadership academy is established to increase parent involvement in schools and district to support academic achievement, on-time graduation, and career and college readiness.				(F) Parent Education and ELL classes began in September 2014. A 10-week series offered in partnership with Centro Rendu provided classes in Spanish to the thirty parents enrolled. The district is partnering with the City of Auburn to provide two more 10-week sessions of classes and is expanding to two additional locations to better serve our non-English speaking families throughout Auburn. The Auburn School District Native American Education Program established a page on Facebook and maintains a presence on the district web site. An electronic communication is sent bi-monthly to all parents regarding Native American program events.
2	All communication to parents and the community is easily accessible, timely, accurate and available in multiple mediums and predominant languages.	A. All essential documents and communication from schools and district are translated in predominant languages and made available through multiple mediums.				(F) This fall the Programs-of-Study documents were translated into Spanish. August through November 626 requests were made for interpreter translation services. ASD currently has thirty-two district level interpreters including 1 French, 2 Marshallese, 4 Punjabi, 1 Russian, 3 Russian/Ukrainian, 19 Spanish and 1 Vietnamese. Family Engagement coordinator shared information in staff trainings regarding translating documents, using interpreters and communicating with families. Direction for using TransAct services and other translation resources are available on the Parent Engagement web page. A brief in-service on how to effectively use interpreters was provided to the school board.
3	Teachers deliver scheduled K-12 progress reports and report cards regularly to parents in a format that meets the needs of the family.	A. Progress reports and report cards are delivered to all parents/guardians regularly and timely to report and support academic progress.				(F) Progress reports and report cards for the first trimester and the first semester were delivered to all parents/guardians. Communication to K-8 parents was provided in multiple formats and languages to meet the needs of the family. The use of interpreters by schools and programs for more effective communication with parents has increased this fall.

Strategies:		Evidence:	F	W	S	Comments:
4	The superintendent or designee encourages investments and partnerships with government, businesses, and community organizations to promote school-to-work opportunities, scholarships, academic awards, and financial resources to address school and program needs.	A. School-to-work opportunities, scholarships, academic awards, and resources from our community are increased to support student achievement and success.				(F) Forty-three students are enrolled in a Career and Technical Education work-based learning opportunity where they learn on the job and earn credit at the same time. Fifty-seven high school students participated in the Rotary Job Shadow this November 2014. The Boeing Summer Internship program hosted three students for an exceptional internship experience with Boeing. This fall all Career and Technical Education Programs held their first industry/business advisory committee meeting of the school year. Muckleshoot Indian Tribe leaders presented to thirty Native American students about the importance of education, why their tribal leaders want them to succeed and offered a glimpse into how systems and program planning works at the tribe. A UC Berkeley Native American representative made two presentations to students, one during the school day and one during the evening so parents could attend as well if desired. Twenty Native American students from all high schools attended the UW Tacoma “Symposium on Contemporary Native American Issues in Higher Education”.
		B. Create and maintain a business community data base for placing students in to mentorship, internship, and job-based learning opportunities.				(F) The Community Lab program has agreements in place with 40 area businesses and 9 school district sites to provide older students with disabilities authentic settings to develop work-place skill development in concert with their IEP transition plans. Presently 30 students are placed in the community settings. Three new businesses have initiated agreements this fall.
		C. Continue to develop and strengthen partnerships with parents, local childcare providers, and agencies that serve PK-12 students for school readiness are strengthened.				(F) Pre-K Cohort 6 for early reading literacy began with eighteen participants. The PreK “GLAD” training began for twenty-five early childcare and preschool providers including Auburn School District ECE and Head Start programs. The ASD Early Learning Executive Committee has met three times this fall and is organizing a “Promising Practices Convening for the Roadmap Districts” in December. The Auburn School District continues strong partnerships with Open Doors for multicultural families, the Autism Outreach Network, Centro Rendu, St. Vincent de Paul, Green River Community College and other agencies as conduits for partnerships with parents to promote student achievement.
		D. Develop partnership with government, agencies, organizations, private schools, and childcare providers to promote cultural competency, implementation of common core standards, access to state required assessments, and world language assessments.				(F) World Language competency based credit assessment was administered on October 4 th with 230 students earning 670 high school credits. The Auburn School District partnered with the Latino/a Educational Achievement Program (LEAP). LEAP Peer Leaders program created at Olympic Middle School, Mount Baker Middle School, and Auburn Riverside High School. Lake View Elementary, Auburn Mountainview High School and Gildo Rey Elementary have hosted multicultural events this fall that have been well attended by families and community members. At Dick Scobee Elementary an evening parent event was attended by over 300 parents and students to promote common core math activities at home.

Goal 3 Policies and Resource Management:						
Auburn School District policies and resources are aligned to the strategic plan.						
Objective - Prioritize Resources: The district will prioritize resources to support the strategic plan, provide safe learning environments, close learning gaps, and accelerate academic achievement for every student.				Evidence: The district is fiscally sound with resources aligned to accelerate student achievement and promote college and career readiness in safe and positive learning environments for all students.		
Strategies:		Evidence:		F	W	S
1	Auburn School District and schools prioritize and align federal, state, local, and grant funding to the strategic plan and school improvement plans.	A. Fiscal resources from a wide variety of sources are aligned to support district and school improvement and standards-based teaching and learning.				(F) Title 1 funds provide instructional support to at-risk students in grades 5-12 in English Language Arts, writing, math, science and instructional specialist at the middle schools to support common core state standards implementation. Title II funds provide professional development for school improvement work, support transition and implementation of common core state standards, professional development for high yield strategies, assessment training, enhancing academic success for all students and accelerated learning. Learning Assistance Program (LAP) funding increases are supporting additional intervention staff at the K-4 level including after school mathematics intervention programs for students K-12 and extended-day kindergarten at four elementary schools. Gates Grant Funds and Lucky Seven Grant funds support English Language Arts and math supplemental purchases and training to support Common Core State Standards transition at the elementary level. LAP resources are providing extended day kindergarten at schools where state funds are not available. To support the implementation of the 2013-2016 Strategic Plan the focus of fiscal resources have expanded to support Family Engagement, implementation of Common Core Standards, SBAC Assessment, technology implementation and Career and College Readiness.
		B. Auburn School District will apply for, receive and utilize Road Map Federal Race to the Top (RTTT) grant funding to address student learning priorities.				(F) 2014-2015 Auburn School District Race to The Top Grant funding supports student learning within nine different areas. Project 1- The Teacher Leadership Academy (ATLA) program; Project 2- My School Data, Regional Data Portal, EWIS and use of data in the classroom; Project 3b -Pre-K GLAD training; Project 4- Chrome Book carts and training for all middle school math teachers; Project 5 - Career Cruising software and counselor training for k-12 College and Career Readiness K-12; Project 6 - UW Dream Team Project Partnership at middle and high schools for College Readiness; Project 7 – During the school day College Board Assessments (ReadiStep/PSAT/SAT); Project 8 - Programs of Study Career Pathways project; and Deep Dive 3 - North Auburn Parent and Community Partnership (NAPCP) Wrap-Around Support for Students and their families.
		C. Regular monitoring and reporting of fiscal stewardship and accountability for district resources is provided to the school board.				(F) The district ended the fiscal year 2013-14 with an Ending Fund Balance of 6.03% of expenditures. Meeting the board goal of 3% to 6%.
2	Auburn School District supports low performing schools with enhanced resources including budget allocations, programs, and staffing.	A. Challenged schools receive additional fiscal and staff resources to address student learning needs.				(F) Aligning with the district strategic plan, additional budget resources are focused on the middle schools, career and college readiness, family engagement and transition to common core standards. Additional resources are also allocated to our most challenged schools to assist in closing opportunity gaps.
		B. Regular review of district policies and procedures to ensure funding, materials, and instructional resources align to student achievement.				(F) No updates at this time
3	Auburn School District and schools recruit, hire, and retain certificated and classified staff representative of district diversity.	A. Percentage of staff working for the district reflects the district’s diversity.				(F) No updates at this time - Report to school board spring 2015.
4	Auburn School District increases leadership opportunities for administrators, teachers, and classified staff working with students.	A. Continued opportunities for leadership development are provided for school board, cabinet, principals, and certificated and classified staff.				(F) Leadership Development Program for Administrators enters year 3 with sixty administrators and principals participating. Fifty-two teachers are participating in ATLA Cohort 5 program with emphasis on leading with instructional technology. Previous ATLA cohorts are continuing to apply their leadership, training and learning in their classroom instruction, SIP and with their PLC teams. November 21 st the school board and superintendent presented “From the Board Room to the Classroom” in Spokane, WA at the WSSDA conference. This was an opportunity to share with school boards and educational leaders from around the state the distributed leadership efforts taking place in the Auburn School District transforming the culture of our district, improving student learning, staff focus and community engagement.

Strategies:		Evidence:	F	W	S	Comments:
5	Auburn School District regularly reviews security plans and procedures of all facilities and schools.	A. All facilities and schools have up-to-date security plans and procedures in place.				(F) District Safety committee continues the efforts to review and update safety plans. Schools are in the process of reviewing and updating their own processes and procedures. The district recently hired a third school police officer and moved one school police officer to a full time DARE coordinator. All schools participated in the emergency preparedness day on October 15, 2014.
6	Schools continue implementing anti-bullying/harassment plans.	A. Anti-bullying/harassment curriculum and programs are utilized at the elementary, middle and high school.				(F) Steps to Respect, Second Steps and Olweus anti-bullying/harassment curriculum continue to be used at the elementary schools. At the secondary schools programs including Where-Everybody-Belongs (WEB), Why Try and LINK Crew are utilized.
7	Auburn School District continues to support intervention and prevention to further reduce substance abuse.	A. Healthy Youth Survey (HYS) is administered every other year at Grades 6, 8 and 10.				(F) All secondary schools completed the Healthy Youth Survey in October.
		B. Policies, procedures, programs, and services are regularly reviewed and funding is provided for prevention and reduction of substance abuse.				(F)) An agreement continues to be in place to provide substance abuse intervention and education at all levels. The district's Safe and Drug Free schools committee meets monthly. A partnership with PSESD is being developed to initiate substance policy reviews and increase intervention opportunities.
8	Schools implement gang awareness, gang intervention strategies, and education.	A. School staff and administrators are provided training on gang awareness.				(F) The Gang Awareness committee continues to study issues impacting our community. Membership has expanded to include other representative groups.

1. Certificated and Classified Personnel Report

Recommendation: That the board approve the attached report.

Tim Cummings, associate superintendent of human resources, will introduce Debbie Leighton, executive director of human resources, who will present information regarding the changes in federal highly qualified requirements and the challenges the district faces with these requirements.

Recommendation: That the school board authorize out-of-endorsement teaching assignments as noted above.

a. Kim Allen, Lake View Elementary School teacher, requests permission to travel to San Antonio, Texas, Wednesday to Friday, February 11-13, 2015. The purpose of the trip would be to attend the Texas Music Educators Conference. Lodging will be at a hotel to be determined, meals will be at local restaurants, and travel will be by airplane. The cost of the trip will be paid by personal and tuition reimbursement funds. A substitute will be needed for three days.

- b. Debra Gary and Deanna Holbrook, Pioneer Elementary School principal and ELL specialist, respectively, request permission to travel to San Francisco, California, Thursday to Sunday, February 12-15, 2015. The purpose of the trip would be to attend the Learning & the Brain Conference. Lodging will be at a hotel to be determined, meals will be at local restaurants, and travel will be by airplane. The cost of the trip will be paid by tuition reimbursement and 21st CCLC grant funds for the ELL specialist and 21st CCLC grant funds for the principal. Substitutes will not be needed.
- c. Michael Newman, deputy superintendent, request permission to travel to Orlando, Florida, Sunday to Friday, February 22-27, 2015. The purpose of the trip is to attend the John Maxwell Advanced Leadership Conference. Lodging will be at the World Center Marriott, meals will be at local restaurants, and travel will be by airplane. All expenses will be paid with district funds. No substitute is needed.

Recommendation:

That the above trips be approved as requested.

PERSONNEL REPORT - CERTIFICATED

Classification	Job Type	Building	Name	Start Date	Hours	Rate of Pay	Comment
Curriculum-Noncurriculum							
CERTIFICATED	PROVIDE ADM LEADERSHIP	ADMIN	LARSON, RHONDA	10/1/2014	90	\$74.00	
CERTIFICATED	WORK-BASED LEARNING	AHS	KEEFE, REBECCA	9/15/2014	35	\$50.93	
CERTIFICATED	ATLA MINI GRANT	AJ	COVEY, ERICA	11/1/2014	12	\$35.21	
CERTIFICATED	ROOM SET UP	AJ	HUIRAS, TERESA	11/17/2014	14	\$31.70	
CERTIFICATED	REFEREE	ALP	BOTKIN, BRENT	11/4/2014	2	\$20.00	
CERTIFICATED	IMMIGRATION CODING	ALP	FERRELL, LEON	11/21/2014	4.5	\$35.57	
CERTIFICATED	AP STUDENT SUPP PLAN	AMHS	AMMONS, TORI	9/5/2014	15.5	\$38.51	
CERTIFICATED	EXT. DAY READING PROG	AMHS	O'BRIEN, LEAHMARIE	10/20/2014	110	\$45.83	
CERTIFICATED	LUNCH DETENTION	AMHS	THOMAS, JANA	11/1/2014	72	\$50.93	
CERTIFICATED	AP STUDENT SUPP PLAN	AMHS	OSBORNE, NORENE	12/3/2014	11	\$36.37	
CERTIFICATED	OUTSIDE WAC TIME	ANNEX	ISLEIN, DENISE	11/24/2014	20	\$38.29	
CERTIFICATED	LA CURRICULUM	ARHS	CHEAN, CLEROBONG	9/3/2014	14	\$32.40	
CERTIFICATED	LA CURRICULUM	ARHS	CONANT, CRYSTAL	9/3/2014	14	\$41.27	
CERTIFICATED	LA CURRICULUM	ARHS	CZARNOWSKI, JENNIFER	9/3/2014	14	\$42.54	
CERTIFICATED	LA CURRICULUM	ARHS	DICKSON, GLENN	9/3/2014	14	\$31.35	
CERTIFICATED	LA CURRICULUM	ARHS	GARCIA, JENNIFER	9/3/2014	14	\$45.17	
CERTIFICATED	LA CURRICULUM	ARHS	KILGALLON, SHAWN	9/3/2014	14	\$50.93	
CERTIFICATED	LA CURRICULUM	ARHS	NEU, SUSAN	9/3/2014	14	\$50.93	
CERTIFICATED	LA CURRICULUM	ARHS	NUTTMAN, KATHRYN	9/3/2014	14	\$30.11	
CERTIFICATED	LA CURRICULUM	ARHS	RIGLEY BERG, ANGELA	9/3/2014	14	\$47.81	
CERTIFICATED	LA CURRICULUM	ARHS	ROHLFF, GRI	9/3/2014	14	\$50.93	
CERTIFICATED	LA CURRICULUM	ARHS	SWANSON, PATRICK	9/3/2014	14	\$48.77	
CERTIFICATED	LA CURRICULUM	ARHS	WILLIAMSON, KARYN	9/3/2014	14	\$50.93	
CERTIFICATED	LA CURRICULUM	ARHS	WRIGHT, TIMOTHY	9/3/2014	14	\$50.93	
CERTIFICATED	LA CURRICULUM	ARHS	YZAGUIRRE, NOE MARCUS	9/3/2014	14	\$36.64	
CERTIFICATED	AT RISK CONF CALLING	ARHS	AARSTAD, JON	10/30/2014	10	\$48.67	
CERTIFICATED	LA CURRICULUM	CAS	DALTON, MARIE	9/1/2014	5.5	\$32.40	
CERTIFICATED	LA CURRICULUM	CAS	DOZIER, ALETHA	9/1/2014	8.5	\$37.12	
CERTIFICATED	LA CURRICULUM	CAS	KOVASH, JULIE	9/1/2014	8.5	\$43.17	
CERTIFICATED	LA CURRICULUM	CAS	LUETTGEN, SANDRA	9/1/2014	14	\$50.93	
CERTIFICATED	LA CURRICULUM	CAS	MACDOUGALL, JOEL	9/1/2014	14	\$40.06	
CERTIFICATED	LA CURRICULUM	CAS	SLEETH, AMY	9/1/2014	8.5	\$37.91	
CERTIFICATED	LA CURRICULUM	CAS	WATKINS, KANIKA	9/1/2014	14	\$48.77	
CERTIFICATED	EXT. DAY READING PROG	CAS	BAXTER, DENISE	10/20/2014	50.5	\$49.93	
CERTIFICATED	EXT. DAY READING PROG	CAS	BROWN, SHAYNA	10/20/2014	33.75	\$44.47	
CERTIFICATED	EXT. DAY READING PROG	CAS	FONDA, PAULETTE	10/20/2014	50.5	\$36.12	
CERTIFICATED	EXT. DAY READING PROG	CAS	HOMFELDT, JENNY	10/20/2014	12	\$50.93	
CERTIFICATED	EXT. DAY READING PROG	CAS	KILLETT, CASEY	10/20/2014	33.75	\$40.66	
CERTIFICATED	EXT. DAY READING PROG	CAS	RAMIREZ-DILLARD, REBECCA	10/20/2014	53.5	\$43.17	
CERTIFICATED	EXT. DAY READING PROG	CAS	THOMSEN, CHRISTINA	10/20/2014	33.75	\$50.93	
CERTIFICATED	CONF HOURS	CAS	MOONEY, KATHLEEN	11/18/2014	3	\$28.09	
CERTIFICATED	IMMIGRATION CODING	DS	ALIYEVA, NAILA	11/26/2014	3	\$50.93	
CERTIFICATED	ASD MENTOR TEACHER	DSL	DEHAVEN, JACQUELINE	9/3/2014		STIPEND \$700	
CERTIFICATED	RTT P-3 PROMISING PRACT	DSL	BUDZYNSKI, NICOLE	11/8/2014		\$35.57	
CERTIFICATED	RTT P-3 PROMISING PRACT	DSL	COUCH, ADAM	11/8/2014		\$63.63	
CERTIFICATED	RTT P-3 PROMISING PRACT	DSL	DEBOLT, JULIE	11/8/2014		\$66.13	
CERTIFICATED	RTT P-3 PROMISING PRACT	DSL	GUSTAFSON, GINA	11/8/2014		\$48.04	
CERTIFICATED	RTT P-3 PROMISING PRACT	DSL	HARRIS, HEIDI	11/8/2014	20	\$75.00	
CERTIFICATED	RTT P-3 PROMISING PRACT	DSL	HORN, LIS	11/8/2014		\$50.93	
CERTIFICATED	RTT P-3 PROMISING PRACT	DSL	JEFFREYS, BRENDAN	11/8/2014		\$51.38	
CERTIFICATED	RTT P-3 PROMISING PRACT	DSL	PETRINA, TAMI	11/8/2014	6	\$56.75	
CERTIFICATED	RTT P-3 PROMISING PRACT	DSL	SCOTT, ERIN	11/8/2014		\$50.93	
CERTIFICATED	RTT P-3 PROMISING PRACT	DSL	SIMONS, DIANE	11/8/2014		\$27.02	

CERTIFICATED	CCSS CURR DEV	EH	RASMUSSEN, KARINE	9/3/2014	100	\$45.17
CERTIFICATED	REFEREE	EH	ANSOTIGUE, JOHN	11/1/2014	2	\$20.00
CERTIFICATED	REFEREE	EH	SAMUELSON, DAVID	11/1/2014	2	\$20.00
CERTIFICATED	UW TELL GRANT	EH	GAYMAN, MARY ANNE	12/4/2014	6	\$63.63
CERTIFICATED	UW TELL GRANT	EH	LOUIE, ALISA	12/4/2014		STIPEND \$2000
CERTIFICATED	VOCAB WORK/BOOK STUDY	EH	CARROLL, LEAH	12/4/2014	4	\$49.93
CERTIFICATED	VOCAB WORK/BOOK STUDY	EH	ERICKSON, STACI	12/4/2014	4	\$48.77
CERTIFICATED	VOCAB WORK/BOOK STUDY	EH	GERVIN-GILLYARD, MARCIA	12/4/2014	4	\$50.93
CERTIFICATED	VOCAB WORK/BOOK STUDY	EH	HERNDON, JENNIFER	12/4/2014	4	\$50.93
CERTIFICATED	VOCAB WORK/BOOK STUDY	EH	HUPPERTEN, MICHELLE	12/4/2014	4	\$50.93
CERTIFICATED	VOCAB WORK/BOOK STUDY	EH	JONES, JANA	12/4/2014	4	\$47.22
CERTIFICATED	VOCAB WORK/BOOK STUDY	EH	LITTELL, LEAH	12/4/2014	4	\$31.78
CERTIFICATED	VOCAB WORK/BOOK STUDY	EH	LOGAN, CAROLYN	12/4/2014	4	\$40.66
CERTIFICATED	VOCAB WORK/BOOK STUDY	EH	LOUIE, ALISA	12/4/2014	4	\$36.12
CERTIFICATED	VOCAB WORK/BOOK STUDY	EH	MUSIAL, DIANA	12/4/2014	4	\$37.00
CERTIFICATED	VOCAB WORK/BOOK STUDY	EH	PARKS, PAMELA	12/4/2014	4	\$50.93
CERTIFICATED	VOCAB WORK/BOOK STUDY	EH	RASMUSSEN, KARINE	12/4/2014	4	\$45.17
CERTIFICATED	VOCAB WORK/BOOK STUDY	EH	ROBELLO, BRITTANY	12/4/2014	4	\$33.46
CERTIFICATED	VOCAB WORK/BOOK STUDY	EH	STENSON, RIKKI	12/4/2014	4	\$41.90
CERTIFICATED	VOCAB WORK/BOOK STUDY	EH	UDD, JESSICA	12/4/2014	4	\$27.39
CERTIFICATED	CCSS CURR DEV	GR	LINVILLE, DIANNA	9/3/2014	100	\$41.27
CERTIFICATED	CCSS CURR DEV	GR	MYERS, MARTY	9/3/2014	100	\$28.44
CERTIFICATED	REFEREE	GR	FITZGERALD, WILLIAM	11/6/2014		\$20.00
CERTIFICATED	REFEREE	GR	GOODLETT, TRAVIS	11/6/2014		\$20.00
CERTIFICATED	SCOREKEEPER	GR	MATSUNO, MAKI	11/6/2014		\$20.00
CERTIFICATED	SCOREKEEPER	GR	SELLERS, KAITLYN	11/6/2014		\$20.00
CERTIFICATED	EXT. DAY READING PROG	HZ	CARTER, AMBER	12/1/2014	24	\$43.17
CERTIFICATED	EXT. DAY READING PROG	HZ	KEARNEY, KAREN	12/1/2014	24	\$50.93
CERTIFICATED	EXT. DAY READING PROG	HZ	WICKSTROM, SCOTT	12/1/2014	24	\$43.17
CERTIFICATED	ASSMT GRADING	IL	MORSE, JAMIE	10/30/2014	9	\$28.09
CERTIFICATED	IEP MTG	IL	COLBURN, KRISTINA	11/10/2014	0.5	\$30.51
CERTIFICATED	READING TEST MIRRORS	LLH	MALONEY, KELLY	11/1/2014	12	\$41.27
CERTIFICATED	REFEREE	LV	MOREHEAD, JONATHAN	11/6/2014	10	\$20.00
CERTIFICATED	NUMBER SYS TEST DEV	MTB	LUBASH, DENNIS	9/3/2014	8	\$50.93
CERTIFICATED	NUMBER SYS TEST DEV	MTB	TOY, DIXIE	9/3/2014	8	\$50.93
CERTIFICATED	EXT. DAY READING PROG	MTB	ARMSTRONG, VICKI	10/20/2014	31.5	\$48.77
CERTIFICATED	EXT. DAY READING PROG	MTB	CARTER, JEREMIAH	10/20/2014	30.5	\$41.27
CERTIFICATED	EXT. DAY READING PROG	MTB	DETWILER, KIMBERLY	10/20/2014	92.5	\$50.93
CERTIFICATED	EXT. DAY READING PROG	MTB	KEMP, JENNIFER	10/20/2014	57	\$50.93
CERTIFICATED	EXT. DAY READING PROG	MTB	KNIGHTON, DAVID	10/20/2014	30.5	\$47.22
CERTIFICATED	EXT. DAY READING PROG	MTB	MARCOTTE, REBECCA	10/20/2014	63	\$50.93
CERTIFICATED	EXT. DAY READING PROG	MTB	MILLANG, SUSAN	10/20/2014	33.5	\$50.93
CERTIFICATED	EXT. DAY READING PROG	MTB	TOY, DIXIE	10/20/2014	33.5	\$50.93
CERTIFICATED	STANDARD IN WRITING	OLY	RINEY, MASON	9/1/2014	18	\$19.43
CERTIFICATED	EXT. DAY READING PROG	OLY	BUTLER, MARK	10/20/2014	48	\$45.79
CERTIFICATED	EXT. DAY READING PROG	OLY	CHASE, JANINE	10/20/2014	20	\$29.23
CERTIFICATED	EXT. DAY READING PROG	OLY	CHOI, DEBORAH	10/20/2014	36	\$30.11
CERTIFICATED	EXT. DAY READING PROG	OLY	COOPER III, PAUL	10/20/2014	48	\$50.93
CERTIFICATED	EXT. DAY READING PROG	OLY	GUEST, JOANNA	10/20/2014	48	\$30.51
CERTIFICATED	EXT. DAY READING PROG	OLY	LENIHAN, LAINE	10/20/2014	63	\$49.93
CERTIFICATED	EXT. DAY READING PROG	OLY	PRICE, CHRISTY	10/20/2014	48	\$38.67
CERTIFICATED	EXT. DAY READING PROG	OLY	RICHARDSON, MOLLY	10/20/2014	63	\$33.82
CERTIFICATED	EXT. DAY READING PROG	OLY	SHEMCHUK, NATALYA	10/20/2014	48	\$27.02
CERTIFICATED	EXT. DAY READING PROG	OLY	SHERIN, TRACY	10/20/2014	33	\$50.93
CERTIFICATED	EXT. DAY READING PROG	OLY	STROBEL, KIMBERLY	10/20/2014	48	\$50.93
CERTIFICATED	EXT. DAY READING PROG	OLY	ZUCATI, NICHOLAS	10/20/2014	33	\$32.76

CERTIFICATED	EXT. DAY READING PROG	RAIN	GULLARD, CHRISTINE	11/4/2014	45.5	\$48.67
CERTIFICATED	EXT. DAY READING PROG	RAIN	LASHER, TRACY	11/4/2014	103	\$45.83
CERTIFICATED	EXT. DAY READING PROG	RAIN	LEWIS, BRENDA	11/4/2014	91	\$44.47
CERTIFICATED	EXT. DAY READING PROG	RAIN	LUONG, JACOB	11/4/2014	37	\$50.93
CERTIFICATED	EXT. DAY READING PROG	RAIN	ROCK, MICHELE	11/4/2014	27	\$35.91
CERTIFICATED	EXT. DAY READING PROG	RAIN	THOMAS, CHARLES	11/4/2014	45.5	\$50.93
CERTIFICATED	CONF EXTRA HOURS	RAIN	GULLARD, CHRISTINE	11/19/2014	6	\$48.67
CERTIFICATED	COUNSELING SUPPORT	TP	ERDMANN, HEIDI	9/2/2014	60	\$50.93
CERTIFICATED	SCHOOL BOARD PREP	WAHS	JOHNSON, ANNA	11/1/2014	2	\$33.12
CERTIFICATED	SIP/TITLE WORK	WAHS	BOSCH, MICHAEL	11/21/2014	2	\$30.51
CERTIFICATED	SIP/TITLE WORK	WAHS	JOHNSON, ANNA	11/21/2014	2	\$33.12
CERTIFICATED	SIP/TITLE WORK	WAHS	LAUSH JR., LARRY	11/21/2014	2	\$50.93
CERTIFICATED	SIP/TITLE WORK	WAHS	WATSON, KENNETH GREG	11/21/2014	2	\$47.22

New Hire

CERTIFICATED	TEACHER/NAT. AMER. SPEC.	OLY	WILSON, DAVID	11/24/2014		C1, S0
CERTIFICATED	TEACHER/SPEC. ED.	LH	AARSTAD, EVANNE	12/11/2014		C9, S16
CERTIFICATED	TEACHER/SPEC. ED.	DS	ORR, LACEY	11/24/2014		C4, S0

Resignation

CERTIFICATED	TEACHER/1ST GRADE	ARTHUR JACOBSEN	SAIKI, DONNA	12/16/2014		DECEASED
CERTIFICATED	TEACHER/CTE	ARHS	WEST, ANITA	10/24/2014		EMPLOYMENT ELSEWHE

PERSONNEL REPORT - CLASSIFIED

Curriculum-Noncurriculum

CLASSIFIED	ACCOMPANIST - CHOIR	AUBURN RIVERSIDE	CARMAN, BARBARA	12/1/2014	25	\$15.00	
CLASSIFIED	ACCOMPANIST - CHOIR	AUBURN RIVERSIDE	WARDELL-MONSON, TIA	12/1/2014	25	\$15.00	
CLASSIFIED	ASSISTANT COACH - BOYS' BASKETBALL	AUBURN MOUNTAINVIEW	BLAS, PHILLIP	11/10/2014	189	STIPEND - \$2,842.56	
CLASSIFIED	ASSISTANT COACH - GIRLS' BASKETBALL	AUBURN MOUNTAINVIEW	FUESTON, JEANE	11/10/2014	168	STIPEND - \$2,753.52	
CLASSIFIED	ASSISTANT COACH - GIRLS' BASKETBALL	AUBURN MOUNTAINVIEW	PAYNE, NNEKA	11/10/2014	84	STIPEND - \$1,376.76	
CLASSIFIED	ASSISTANT COACH - GYMNASTICS	AUBURN RIVERSIDE	ROBINSON, DANIELLE	11/1/2014	99	STIPEND - \$1,737.50	
CLASSIFIED	ASSISTANT COACH - WRESTLING	RAINIER	MURR, JAMES	1/5/2015	150	STIPEND - 4\$4,371	
CLASSIFIED	CATERING	AUBURN HIGH	JACKSON, KAYE	11/19/2014	20	\$16.53	
CLASSIFIED	CATERING	AUBURN HIGH	LINDSEY, HEIDI	11/19/2014	20	\$15.89	
CLASSIFIED	CATERING	AUBURN HIGH	LOOMIS, DAWN MICHELE	11/19/2014	20	\$16.38	
CLASSIFIED	CATERING	AUBURN HIGH	MATHEWS, MARY	11/19/2014	20	\$16.22	
CLASSIFIED	COACH - 6TH GRADE WRESTLING	RAINIER	BLOOM, BRIAN	1/5/2015	40	STIPEND - \$728	
CLASSIFIED	EXTENDED LEARNING - MATH	DEPT OF STUDENT LRNG	BALDWIN, ARTHUR	10/20/2014	80	\$15.89	
CLASSIFIED	EXTENDED LEARNING - MATH	DEPT OF STUDENT LRNG	CLARK-GUSTAFSON, CHRISTIN	10/27/2014	72	\$16.52	
CLASSIFIED	EXTENDED LEARNING - MATH	DEPT OF STUDENT LRNG	DAUMIT, ELISABETH	10/27/2014	72	\$17.53	
CLASSIFIED	EXTENDED LEARNING - MATH	DEPT OF STUDENT LRNG	HOLT, MARIANNE	10/20/2014	76	\$17.28	
CLASSIFIED	EXTENDED LEARNING - MATH	DEPT OF STUDENT LRNG	MILLER, TAMMY	10/27/2014	72	\$17.53	
CLASSIFIED	EXTENDED LEARNING - MATH	DEPT OF STUDENT LRNG	STARKEK, KELLY	10/27/2014	72	\$16.53	
CLASSIFIED	EXTENDED LEARNING PROGRAM - MATH (SNACKS)	DEPT. OF STDNT LRNG	ZINTEL, HEATHER	10/20/2014	38	\$15.89	
CLASSIFIED	EXTRA HOURS - CLASSROOM SUPPORT	HEAD START	NICAISE, CYNTHIA	11/21/2014		\$16.05	
CLASSIFIED	EXTRA HOURS - CLASSROOM SUPPORT	HEAD START	NICAISE, CYNTHIA	11/21/2014		\$18.77	
CLASSIFIED	EXTRA HOURS - STUDENT ASSISTANCE	ANNEX	POTTER, ALLEN	12/4/2014		\$16.21	
CLASSIFIED	LEAD TEACHER - TEMPORARY	HEAD START	NICAISE, CYNTHIA	12/1/2014		\$18.77	
CLASSIFIED	SUPPORT - UW GRANT ADMINISTRATION	EVERGREEN HEIGHTS	GREER, LISA	12/3/2014	20	\$22.98	
CLASSIFIED	TITLE - DATA ENTRY	OLYMPIC	DAUMIT, ELISABETH	9/3/2014	50	\$17.53	
CLASSIFIED	TUTOR	ANNEX	REYNOLDS, ALICE	11/20/2014		\$16.84	
CLASSIFIED	WINTER INSPECTION	TRANSPORTATION	BARNINO JR., BARNEY	12/10/2014		STIPEND - \$500	
CLASSIFIED	WINTER INSPECTION	TRANSPORTATION	BREHMER, JAMES	12/10/2014		STIPEND - \$500	
CLASSIFIED	WINTER INSPECTION	TRANSPORTATION	MCMULLEN, MARK	12/10/2014		STIPEND - \$500	
CLASSIFIED	WINTER INSPECTION	TRANSPORTATION	POTTS, CHAD	12/10/2014		STIPEND - \$500	
CLASSIFIED	WINTER INSPECTION	TRANSPORTATION	RADCLIFF, WAYNE	12/10/2014		STIPEND - \$500	
CLASSIFIED	WINTER INSPECTION	TRANSPORTATION	SLOANE, MICHAEL	12/10/2014		STIPEND - \$500	
CLASSIFIED	WINTER INSPECTION	TRANSPORTATION	WOLTERS, PAUL	12/10/2014		STIPEND - \$500	

New Hire

CLASSIFIED	ASSISTANT COOK	AMHS	CIONGOLI, ANDREA	1/6/2015	2	\$	14.86	QUALIFIED APPLICANT
CLASSIFIED	ASSISTANT COOK	RAINIER	GREY, JULIA	12/15/2014	3	\$	14.86	QUALIFIED APPLICANT
CLASSIFIED	ASSISTANT COOK	AHS/CNS	STEARNS, ROBIN	1/5/2015	3 & 2	\$	14.86	QUALIFIED APPLICANT
CLASSIFIED	ASSISTANT COOK FLOATER	CNS	DECKER, ANITA	1/5/2015	2	\$	14.86	QUALIFIED APPLICANT
CLASSIFIED	ASSISTANT COOK FLOATER	CNS	GOLLNICK, CHARLOTTE	1/5/2015	2	\$	14.86	QUALIFIED APPLICANT
CLASSIFIED	ASSISTANT COOK FLOATER	CNS	LOPA, CHEYENNE	1/5/2015	2	\$	14.86	QUALIFIED APPLICANT
CLASSIFIED	ASSISTANT COOK FLOATER	CNS	RAMIREZ, LETICIA	1/5/2015	2	\$	14.86	QUALIFIED APPLICANT
CLASSIFIED	CISA COORDINATOR	GILDO REY	NAVARRO, TRACINA	12/8/2014	4	\$	15.89	QUALIFIED APPLICANT
CLASSIFIED	TRANSPORTATION ASSISTANT	TRANSPORTATION	JONES, CHARLES	12/1/2014	6.8	\$	16.40	QUALIFIED APPLICANT
CLASSIFIED	TRANSPORTATION ASSISTANT	TRANSPORTATION	STANGELAND, ANNE	11/26/2014	4.8	\$	16.40	QUALIFIED APPLICANT

Resignation

CLASSIFIED	ASSISTANT COOK	AMHS	COOKSTON, SHERYL	12/19/2014			PERSONAL
CLASSIFIED	BUS DRIVER	TRANSPORTATION	MCDONALD, TERRI	1/6/2015			PERSONAL
CLASSIFIED	PARA EDUCATOR CLASS-SIZE	ARTHUR JACOBSEN	LARSCHEID, CANDY	12/19/2014			PERSONAL

CERTIFICATED RESUMES

a. Evanne Aarstad--special education--Lea Hill Elementary

Ms. Aarstad earned her bachelor degree at Puget Sound University and her master degree at Walden University.

Evanne previously worked for the Sumner School District.

b. Lacey Orr--special education--Dick Scobee Elementary

Ms. Orr earned her bachelor degree at Western Washington University and her master degree at City University.

Lacey completed her student teaching at Dick Scobee Elementary in June, 2014.

c. David Wilson--Native American Specialist--Olympic Middle School

Mr. Wilson received his "First Peoples' Language, Culture and Oral Traditions" teaching certificate in March, 2014.

David has been a substitute in the Auburn School District.

BUILDING PROGRAM

1. Authorization to Call for Bids–Auburn Riverside High School Ball Field and Site Improvements

Authorization is requested to call for bids for the Auburn Riverside High School Ball Field and Site Improvements project. The project consists of new baseball and softball fields and miscellaneous site improvements. The estimated construction cost is \$3,800,000 and will be funded from the Capital Projects fund.

Jeffrey Grose, executive director of capital projects, will be present to recommend this authorization.

Recommendation: That authorization be given to call for bids for the Auburn Riverside High School Ball Field and Site Improvements project.

2. Authorization to Call for Bids–Auburn Riverside High School Building Improvements

Authorization is requested to call for bids for the Auburn Riverside High School Building Improvements project. The project consists of cleaning and sealing of exterior brick, interior improvements, and improvements to selected mechanical and electrical systems. The estimated construction cost is \$1,500,000 and will be funded from the Capital Projects fund.

Jeffrey Grose will be present to recommend this authorization.

Recommendation: That authorization be given to call for bids for the Auburn Riverside High School Building Improvements project.

3. Authorization to Call for Bids–Cascade and Mt. Baker Middle School Improvements

Authorization is requested to call for bids for the Cascade and Mt. Baker Middle School Improvements project. The project consists of ball field improvements, interior improvements, and improvements to selected mechanical and electrical systems. The estimated construction cost is \$3,000,000 and will be funded from the Capital Projects fund.

Jeffrey Grose will be present to recommend this authorization.

Recommendation: That authorization be given to call for bids for the Cascade and Mt. Baker Middle School Improvements project.

4. Authorization to Call for Bids–Evergreen Heights Elementary School Site Improvements

Authorization is requested to call for bids for the Evergreen Heights Elementary School Site Improvements project. The project consists of parking lot, bus loading, and playground improvements. The estimated construction cost is \$2,200,000 and will be funded from the Capital Projects fund.

Jeffrey Grose will be present to recommend this authorization.

Recommendation: That authorization be given to call for bids for the Evergreen Heights Elementary School Site Improvements project.

5. Auburn High School Modernization and Reconstruction Project

Attached are copies of Change Order Nos. 52, 53, 54 and 55 for the Auburn High School Modernization and Reconstruction project which should be considered to permit a change in the construction contract amount.

Original Contract	\$80,570,700.00
Previously Approved	2,251,663.00
Change Order No. 52	272,693.00
Change Order No. 53	(133,741.00)
Change Order No. 54	39,466.00
Change Order No. 55	+\$ 12,459.00
New Contract Amount	<u>\$83,013,240.00</u>

Jeffrey Grose will be present to recommend acceptance of these change orders.

Recommendation: That Change Order Nos. 52, 53, 54, and 55 be accepted for the Auburn High School Modernization and Reconstruction project and the contract amount be increased by \$190,877.00 for a new contract amount of \$83,013,240.00.

6. Auburn High School–Work in Progress Report

Jeffrey Grose will be present to report on the progress of the Auburn High School Modernization & Reconstruction project.

Change Order

PROJECT:	AUBURN HIGH SCHOOL MODERNIZATIONS & RECONSTRUCTION 800 Fourth Street NE, Auburn, WA 98002	CHANGE ORDER NO.:	52
TO CONTRACTOR:	Lydig Construction Company 3180 139 th Ave SE, Suite 110 Bellevue, WA 98005	DATE:	December 16, 2014
		CONTRACT DATED:	February 18, 2013
		ARCHITECT'S PROJECT NO.:	121-10016

The Contract is changed as follows:

1. PR-106	Provide Masonry and Metal Siding at Auto Shop.	\$272,693.00
-----------	--	--------------

The original Contract Sum was	\$	80,570,700.00
Net change by previously authorized Change Orders	\$	2,251,663.00
The Contract Sum prior to this Change Order was	\$	82,822,363.00
The Contract Sum will be increased by this change order	\$	272,693.00
The new Contract Sum including this Change Order will be	\$	83,095,056.00

The Contract Time will remain unchanged by	0 days
The date of Substantial Completion as of the date of this Change Order therefore is	July 1, 2016

Pursuant to the Contract, the execution of this Change Order constitutes a waiver of claims by the Contractor arising out of the Work to be performed or deleted pursuant to this Change Order, except as specifically described herein. Reservation of rights will be deemed waived and are void unless the reserved rights are specifically described in detail to the satisfaction of the Owner and are initialed by the Owner.

NACIArchitecture
2025 First Avenue, Suite 300
Seattle, WA 98121

Auburn School District #408
915 Fourth Street NE
Auburn, WA 98002

Lydig Construction Company
3180 139th Ave SE, Suite 110
Bellevue, WA 98005



By: _____
Brent Compton
Date: December 16, 2014

By: _____
Michael Newman
Date: _____



By: _____
Brandon Watts
Date: 12-16-2014

Change Order

PROJECT: AUBURN HIGH SCHOOL MODERNIZATIONS & RECONSTRUCTION
800 Fourth Street NE, Auburn, WA 98002

CHANGE ORDER NO.: **53**

DATE: December 16, 2014

TO CONTRACTOR: Lydig Construction Company
3180 139th Ave SE, Suite 110
Bellevue, WA 98005

CONTRACT DATED: February 18, 2013

ARCHITECT'S PROJECT NO.: 121-10016

The Contract is changed as follows:

1. PR-136	Delete Removal of Woody Material Obstructions at Augercast Piles.	(\$62,100.00)
2. PR-137.1	Delete Installation of Additional Augercast Piling.	(\$31,000.00)
3. PR-137.2	Provide Credit for a Reduction in Amount of Augercast Piling Installation.	<u>(\$40,641.00)</u>
	Total This Change Order	(\$133,741.00)

The original Contract Sum was	\$	80,570,700.00
Net change by previously authorized Change Orders	\$	2,524,356.00
The Contract Sum prior to this Change Order was	\$	83,095,056.00
The Contract Sum will be increased by this change order	\$	(133,741.00)
The new Contract Sum including this Change Order will be	\$	82,961,315.00

The Contract Time will remain unchanged by 0 days
The date of Substantial Completion as of the date of this Change Order therefore is July 1, 2016

Pursuant to the Contract, the execution of this Change Order constitutes a waiver of claims by the Contractor arising out of the Work to be performed or deleted pursuant to this Change Order, except as specifically described herein. Reservation of rights will be deemed waived and are void unless the reserved rights are specifically described in detail to the satisfaction of the Owner and are initialed by the Owner.

NACIArchitecture
2025 First Avenue, Suite 300
Seattle, WA 98121

Auburn School District #408
915 Fourth Street NE
Auburn, WA 98002

Lydig Construction Company
3180 139th Ave SE, Suite 110
Bellevue, WA 98005



By: Brent Compton
Date: December 16, 2014

By: Michael Newman
Date: _____



By: Brandon Watts
Date: 12-16-2014

Change Order

PROJECT: AUBURN HIGH SCHOOL MODERNIZATIONS & RECONSTRUCTION
800 Fourth Street NE, Auburn, WA 98002

CHANGE ORDER NO.: **54**

DATE: December 16, 2014

TO CONTRACTOR: Lydig Construction Company
3180 139th Ave SE, Suite 110
Bellevue, WA 98005

CONTRACT DATED: February 18, 2013

ARCHITECT'S PROJECT NO.: 121-10016

The Contract is changed as follows:

1. CCA-020	Remove Existing Concrete Foundations near Grid Line A18.	\$6,974.00
2. CCA-141	Provide Access Panels at Rooms 403 and 510C.	\$1,297.00
3. CCA-220	Change Motor at Sectional Door in Woods 506.	\$2,590.00
4. CCA-248R	Provide Pipe Enclosure in Room 213.	\$1,213.00
5. CCA-257	Provide Additional Demolition at PAC Concrete Slabs and Stairways.	\$29,442.00
6. CCA-304	Delete Relocation of EMS Head End Equipment at Temporary Classrooms.	<u>(\$2,050.00)</u>
	Total This Change Order	\$39,466.00

The original Contract Sum was	\$	80,570,700.00
Net change by previously authorized Change Orders	\$	2,390,615.00
The Contract Sum prior to this Change Order was	\$	82,961,315.00
The Contract Sum will be increased by this change order	\$	39,466.00
The new Contract Sum including this Change Order will be	\$	83,000,781.00

The Contract Time will remain unchanged by 0 days
The date of Substantial Completion as of the date of this Change Order therefore is July 1, 2016

Pursuant to the Contract, the execution of this Change Order constitutes a waiver of claims by the Contractor arising out of the Work to be performed or deleted pursuant to this Change Order, except as specifically described herein. Reservation of rights will be deemed waived and are void unless the reserved rights are specifically described in detail to the satisfaction of the Owner and are initialed by the Owner.

NACIArchitecture
2025 First Avenue, Suite 300
Seattle, WA 98121

Auburn School District #408
915 Fourth Street NE
Auburn, WA 98002

Lydig Construction Company
3180 139th Ave SE, Suite 110
Bellevue, WA 98005



By: Brent Compton
Date: December 16, 2014

By: Michael Newman
Date: _____



By: Brandon Watts
Date: 12-16-2014

Change Order

PROJECT: AUBURN HIGH SCHOOL MODERNIZATIONS & RECONSTRUCTION
800 Fourth Street NE, Auburn, WA 98002

CHANGE ORDER NO.: **55**

DATE: December 16, 2014

TO CONTRACTOR: Lydig Construction Company
3180 139th Ave SE, Suite 110
Bellevue, WA 98005

CONTRACT DATED: February 18, 2013

ARCHITECT'S PROJECT NO.: 121-10016

The Contract is changed as follows:

1. CCA-142	Modify Power to Uninterrupted Power Supplies in Telecommunications Rooms.	\$1,989.00
2. CCA-260	Provide Overtime Compensation for Phase 2 Electrical Work.	\$792.00
3. CCA-292	Provide Clocks and Intercom Speakers in Rooms 711D and 712D.	\$3,788.00
4. CCA-293	Provide Clock in Corridor 072.	\$1,509.00
5. CCA-302	Replace Sewage Pump Serving Temporary Classrooms.	\$3,004.00
6. CCA-310	Provide HVAC System Shutdown Delay in Fire Alarm System.	<u>\$1,377.00</u>
	Total This Change Order	\$12,459.00

The original Contract Sum was	\$	80,570,700.00
Net change by previously authorized Change Orders	\$	2,430,081.00
The Contract Sum prior to this Change Order was	\$	83,000,781.00
The Contract Sum will be increased by this change order	\$	12,459.00
The new Contract Sum including this Change Order will be	\$	83,013,240.00

The Contract Time will remain unchanged by 0 days
The date of Substantial Completion as of the date of this Change Order therefore is July 1, 2016

Pursuant to the Contract, the execution of this Change Order constitutes a waiver of claims by the Contractor arising out of the Work to be performed or deleted pursuant to this Change Order, except as specifically described herein. Reservation of rights will be deemed waived and are void unless the reserved rights are specifically described in detail to the satisfaction of the Owner and are initialed by the Owner.

NACIArchitecture
2025 First Avenue, Suite 300
Seattle, WA 98121

Auburn School District #408
915 Fourth Street NE
Auburn, WA 98002

Lydig Construction Company
3180 139th Ave SE, Suite 110
Bellevue, WA 98005



By: Brent Compton
Date: December 16, 2014

By: Michael Newman
Date: _____



By: Brandon Watts
Date: 12-16-2014

FINANCE

1. Vouchers

Vouchers will be presented.

Recommendation: That these vouchers be signed.

2. Financial Statements

Financial statements for November, 2014, are presented to the board for their information.

The following vouchers, as audited and certified by the Auditing Officer as required by RCW 42.24.080, and those expense reimbursement claims certified as required by RCW 42.24.090, are approved for payment. Those payments have been recorded on this listing which has been made available to the board.

As of December 22, 2014, the board, by a _____ vote, approves payments, totaling \$892,443.27. The payments are further identified in this document.

Total by Payment Type for Cash Account, US Bank of Washington:
Warrant Numbers 422955 through 423180, totaling \$892,443.27

Secretary _____	Board Member _____
Board Member _____	Board Member _____
Board Member _____	Board Member _____

Check Nbr	Vendor Name	Check Date	Check Amount
422955	*KING COUNTY SUPERIOR COURT	12/22/2014	1,882.76
422956	3 WIRE GROUP INC	12/22/2014	721.49
422957	410 QUARRY LLC	12/22/2014	198.21
422958	ADAMS, JENNIFER L	12/22/2014	500.00
422959	AGRISHOP INC	12/22/2014	67.04
422960	AMERICAN ACADEMY ~ GRADUATION	12/22/2014	12,381.00
422961	AMERICAN FLOORS & BLINDS	12/22/2014	179.44
422962	ANDERSON SPECIALTIES LLC	12/22/2014	750.08
422963	ANIXTER INC	12/22/2014	520.76
422964	APPLES TO GO	12/22/2014	4,662.00
422965	ARAMARK UNIFORM SERVICES	12/22/2014	43.57
422966	ASBO INTERNATIONAL	12/22/2014	438.00
422967	BAZALDUA, HONORATO	12/22/2014	11.35
422968	BLACKBURN, MARISSA M	12/22/2014	4.00
422969	BLUMENTHAL UNIFORMS & EQUIPMEN	12/22/2014	39.37
422970	BRINKS INC	12/22/2014	328.14
422971	BRYSON SALES & SERVICE	12/22/2014	382.54

Check Nbr	Vendor Name	Check Date	Check Amount
422972	CARPINITO BROTHERS INC	12/22/2014	413.00
422973	CARVIN CORPORATION	12/22/2014	1,017.38
422974	CASCADE BEAUTY COLLEGE	12/22/2014	195.27
422975	CDW GOVERNMENT INC	12/22/2014	457.54
422976	CHILDRENS INSTITUTE FOR LEARNI	12/22/2014	8,231.88
422977	CITY OF PACIFIC	12/22/2014	1,864.92
422978	COLBY, BARBARA	12/22/2014	6.00
422979	COLLEGE BOARD	12/22/2014	5,200.00
422980	COLLEGE BOARD WRO	12/22/2014	1,060.00
422981	CONSOLIDATED ELECTRICAL DIST I	12/22/2014	629.63
422982	CUBILLOS MORENO, GABRIELA	12/22/2014	240.13
422983	CUMMINS NW LLC	12/22/2014	673.91
422984	CUSTOM ELECTRIC & CONTROLS	12/22/2014	135.10
422985	Vendor Continued Check	12/22/2014	0.00
422986	DAIRY FRESH FARMS INC	12/22/2014	37,635.57
422987	DB SECURE SHRED	12/22/2014	134.34
422988	DELTA ELECTRIC MOTORS INC	12/22/2014	720.67
422989	DEPT OF ENTERPRISE SERVICES	12/22/2014	450.00
422990	DRUG EDUCATION SERVICES LLC	12/22/2014	78.00
422991	DRUG FREE BUSINESS	12/22/2014	93.00
422992	DYNAMIC LANGUAGE CENTER INC	12/22/2014	480.48
422993	EARL, REBECCA E	12/22/2014	150.00
422994	EASTBAY INC	12/22/2014	1,155.00
422995	ECOLAB INC	12/22/2014	306.00
422996	EDEN ADVANCED PEST TECHNOLOGIE	12/22/2014	104.03

Check Nbr	Vendor Name	Check Date	Check Amount
422997	EK BEVERAGE COMPANY	12/22/2014	1,425.50
422998	ELECTROCOM	12/22/2014	142.35
422999	EVELYN N PROBERT LITERACY CONS	12/22/2014	4,215.00
423000	FAIRFAX HOSPITAL INC	12/22/2014	5,250.00
423001	FEDERAL WAY RADIATOR & AUTOMOT	12/22/2014	120.13
423002	Vendor Continued Check	12/22/2014	0.00
423003	Vendor Continued Check	12/22/2014	0.00
423004	Vendor Continued Check	12/22/2014	0.00
423005	Vendor Continued Check	12/22/2014	0.00
423006	FERGUSON ENTERPRISES INC #3007	12/22/2014	2,268.45
423007	FOLLETT SCHOOL SOLUTIONS INC	12/22/2014	171.19
423008	FRAZIER, JEANETTE ELIZABETH	12/22/2014	350.00
423009	GARCIA, ANTHONY	12/22/2014	234.93
423010	GILDO REY PTA	12/22/2014	255.00
423011	GOODY MAN DISTRIBUTING INC	12/22/2014	2,556.63
423012	GRAINGER DEPT 810392688	12/22/2014	395.68
423013	GUARDIAN SECURITY SYSTEMS INC	12/22/2014	1,592.00
423014	HAMMOND ASHLEY VIOLINS	12/22/2014	10,236.68
423015	HAZELWOOD ELEM	12/22/2014	460.00
423016	HENDRICKSON ASSOCIATES LLC	12/22/2014	2,089.26
423017	HOBART SERVICE	12/22/2014	36.70
423018	HOLM, CYNTHIA	12/22/2014	1,519.28
423019	HONEYSETT, TERRIE ANN	12/22/2014	50.00
423020	HOPE & HELP COUNSELING AGENCY	12/22/2014	2,100.00
423021	HOUGHTON MIFFLIN HARCOURT	12/22/2014	2,800.00

Check Nbr	Vendor Name	Check Date	Check Amount
423022	INNOVAC	12/22/2014	1,314.00
423023	JUNIOR ACHIEVEMENT OF WASH	12/22/2014	585.00
423024	JW PEPPER & SON INC	12/22/2014	1,268.51
423025	KING, REYANNA MARIE JOSLYN	12/22/2014	225.00
423026	KING COUNTY DIRECTORS ASSN	12/22/2014	328.38
423027	KONICA MINOLTA BUSINESS SOLUTI	12/22/2014	4,017.54
423028	LDG AV LLC	12/22/2014	1,069.52
423029	LEKTAK, WILLIAM	12/22/2014	179.20
423030	LICKEY, BRITTNEY LYNN	12/22/2014	50.00
423031	MAXIM STAFFING SOLUTIONS	12/22/2014	2,726.79
423032	METRIX ENGINEERS LLC	12/22/2014	1,034.78
423033	MICONTROLS INC	12/22/2014	3,484.96
423034	Vendor Continued Check	12/22/2014	0.00
423035	MICRO COMPUTER SYSTEMS INC	12/22/2014	122,903.74
423036	MILES ABA SERVICES	12/22/2014	5,400.00
423037	MILL SUPPLY INC	12/22/2014	50.06
423038	MOTOR OIL SUPPLY INC	12/22/2014	1,862.93
423039	MUSIC & ARTS CENTER	12/22/2014	715.62
423040	NAVARRO, ANNETTE	12/22/2014	310.46
423041	NEWS TRIBUNE ADVERTISING	12/22/2014	982.80
423042	NW SCHOOL HEARING FOR HEARING	12/22/2014	3,700.00
423043	NW TEXTBOOK DEPOSITORY	12/22/2014	8,660.28
423044	OCCUPATIONAL HEALTH SERVICES	12/22/2014	250.00
423045	ORCA PACIFIC INC	12/22/2014	677.47
423046	OSMAN, MUNA	12/22/2014	3.00

Check Nbr	Vendor Name	Check Date	Check Amount
423047	OUTPATIENT PHYSICAL THERAPY &	12/22/2014	6,021.08
423048	PARKER PAINT MFG CO INC	12/22/2014	19.91
423049	PEARSON EDUCATION INC	12/22/2014	20,024.46
423050	PETRO CARD	12/22/2014	2,778.52
423051	PITNEY BOWES PRESORT SERVICES	12/22/2014	2,326.22
423052	PLUMMASTER INC	12/22/2014	3,820.68
423053	PNW FIRST	12/22/2014	2,000.00
423054	PREG O'DONNELL & GILLETT PLLC	12/22/2014	5,000.00
423055	PRIMARY CONCEPTS	12/22/2014	48.03
423056	PROGRESSUS THERAPY INC	12/22/2014	8,805.07
423057	PUGET SOUND ENERGY ELECTRIC	12/22/2014	113,411.43
423058	Vendor Continued Check	12/22/2014	0.00
423059	PUGET SOUND ENERGY NAT GAS	12/22/2014	57,431.51
423060	PUGET SOUND ESD	12/22/2014	595.00
423061	PUGET SOUND EDUCATIONAL SERVIC	12/22/2014	17,680.00
423062	REAGAN, MCKENNA	12/22/2014	175.00
423063	RELIABLE PARTS INC	12/22/2014	99.63
423064	RENTON CONCRETE RECYCLERS LLC	12/22/2014	125.00
423065	ROCK CHIP GUYS LLC	12/22/2014	306.60
423066	RODRIGUEZ, MARTHA RAMOS	12/22/2014	9.00
423067	RWC INTERNATIONAL LTD INC	12/22/2014	133.84
423068	SANDLAND PROMOTIONS	12/22/2014	274.91
423069	SARDEN, TANYA J	12/22/2014	227.92
423070	SAXTON BRADLEY INC	12/22/2014	8,332.95
423071	SCARFF FORD	12/22/2014	60.20

Check Nbr	Vendor Name	Check Date	Check Amount
423072	SCHETKY NW SALES INC	12/22/2014	1,638.82
423073	SEATTLE CHILDRENS THEATRE	12/22/2014	600.00
423074	SHARP BUSINESS SYSTEMS	12/22/2014	99.96
423075	SOCIETY OF ST VINCENT DE PAUL,	12/22/2014	5,330.00
423076	SOLIANI HEALTH	12/22/2014	3,835.00
423077	SOOS CREEK WATER & SEWER DISTR	12/22/2014	3,268.56
423078	SOUTH KING EARLY INTERVENTION	12/22/2014	10,400.00
423079	SPRAGUE ISRAEL GILES INC	12/22/2014	4,189.50
423080	STAFF DEVELOPMENT FOR EDUCATOR	12/22/2014	6,120.00
423081	STANSELL GLASS INC	12/22/2014	335.34
423082	STATE AUDITOR'S OFFICE LEGIS B	12/22/2014	251.10
423083	SUPERIOR ENGINEERING SERVICES	12/22/2014	232.00
423084	SUPERIOR ENGINEERING SERVICES	12/22/2014	1,193.29
423085	SUPERIOR ENGINEERING SERVICES	12/22/2014	3,548.35
423086	SUPERIOR ENGINEERING SERVICES	12/22/2014	2,764.88
423087	SUPPLEMENTAL HEALTH CARE	12/22/2014	3,780.00
423088	TED BROWN MUSIC COMPANY	12/22/2014	100.64
423089	THUNDERING OAK ENTERPRISES INC	12/22/2014	1,762.95
423090	TOMYS INC	12/22/2014	4,818.15
423091	TOP ECHELON CONTRACTING INC	12/22/2014	14,983.46
423092	TRANSACT COMMUNICATIONS INC	12/22/2014	684.38
423093	TRANSOURCE	12/22/2014	341.86
423094	TROXELL COMMUNICATIONS INC	12/22/2014	300.47
423095	UNIFIRST CORPORATION	12/22/2014	741.93
423096	USA MOBILITY WIRELESS INC	12/22/2014	354.67

Check Nbr	Vendor Name	Check Date	Check Amount
423097	WARREN, ELEANOR J	12/22/2014	86.63
423098	Vendor Continued Check	12/22/2014	0.00
423099	WASH FLORAL SERVICE INC	12/22/2014	985.66
423100	WASH INDUSTRIAL TECH EDUC ASSN	12/22/2014	230.00
423101	WASH INTERSCHOLASTIC ACTIVITIE	12/22/2014	12,576.24
423102	WASH SCHOOL PERSONNEL ASSN	12/22/2014	450.00
423103	WASH TRACTOR INC	12/22/2014	602.75
423104	WASWUG/WSIPC	12/22/2014	1,000.00
423105	WATER DISTRICT #111	12/22/2014	3,985.04
423106	WESTERN BUS SALES	12/22/2014	158.95
423107	WEST COAST PLATEN COMPANY	12/22/2014	79.29
423108	WILBUR ELLIS COMPANY	12/22/2014	73.58
423109	WOLFE, UNA PILIALOHA	12/22/2014	13,750.00
423110	WORLD LANGUAGE SERVICES LLC	12/22/2014	2,642.16
423111	WSIPC NW ESD FISCAL AGENT	12/22/2014	22,541.50
423112	APOLLO MECHANICAL CONTRACTORS	12/22/2014	1,007.03
423113	BARGREEN ELLINGSON INC	12/22/2014	16,809.94
423114	DELL MARKETING LP % DELL USA L	12/22/2014	24,755.77
423115	GOVCONNECTION INC	12/22/2014	318.91
423116	KING COUNTY DIRECTORS ASSN	12/22/2014	29,241.98
423117	MCKINNEY TRAILERS & CONTAINERS	12/22/2014	105.39
423118	MICRO COMPUTER SYSTEMS INC	12/22/2014	75,766.66
423119	NAC ARCHITECTURE INC	12/22/2014	2,200.00
423120	PROLIPHIX INC	12/22/2014	6,525.17
423121	SHOCKEY PLANNING GROUP INC	12/22/2014	1,365.30

Check Nbr	Vendor Name	Check Date	Check Amount
423122	SOUND ENERGY SYSTEMS	12/22/2014	7,082.46
423123	ULINE	12/22/2014	147.53
423124	WELSH COMMISSIONING GROUPS INC	12/22/2014	7,429.00
423125	ALL SEASON CARPET & UPHOLSTERY	12/22/2014	250.00
423126	AUBURN HIGH SCHOOL	12/22/2014	718.68
423127	AUBURN FOOD BANK	12/22/2014	65.00
423128	AUBURN RIVERSIDE H S BAND PARE	12/22/2014	275.00
423129	AUBURN SCHOOL DIST 408 **	12/22/2014	1,237.50
423130	BROADWAY AT THE PARAMOUNT	12/22/2014	4,100.50
423131	COCA COLA REFRESHMENTS USA INC	12/22/2014	1,337.67
423132	CONTINENTAL ATHLETIC SUPPLY	12/22/2014	225.17
423133	COSTCO	12/22/2014	3,368.02
423134	DECARTERET DESIGNS LLC	12/22/2014	964.00
423135	DISPLAY & COSTUME SUPPLY	12/22/2014	121.87
423136	DUSTIN DONATION FUND	12/22/2014	489.99
423137	DYSART, TRACI	12/22/2014	328.21
423138	FAT BLACK SQUIRREL STUDIO	12/22/2014	800.00
423139	GREEN RIVER MUSIC EDUCATORS AS	12/22/2014	105.00
423140	HELY & WEBER	12/22/2014	54.95
423141	HENRY SCHEIN INC	12/22/2014	1,566.63
423142	IMAGE MASTERS INC	12/22/2014	261.38
423143	KEY CLUB INTERNATIONAL	12/22/2014	1,724.97
423144	LIDS TEAM SPORTS	12/22/2014	1,116.91
423145	Vendor Continued Check	12/22/2014	0.00
423146	Vendor Continued Check	12/22/2014	0.00

Check Nbr	Vendor Name	Check Date	Check Amount
423147	LOTZARAMA INC RICHS 5 STAR PIZ	12/22/2014	1,145.90
423148	M & R SALES	12/22/2014	1,890.00
423149	MARCHANT, TOM	12/22/2014	40.32
423150	MEREDITH, JAN	12/22/2014	660.00
423151	NEW HORIZON FUNDRAISING	12/22/2014	254.00
423152	NW FUNDRAISING	12/22/2014	5,575.19
423153	OUTHOUSE SCREENPRINTING	12/22/2014	269.19
423154	PACIFIC NW THEATRE ASSN INC	12/22/2014	42.10
423155	PACIFIC PUBLISHING COMPANY	12/22/2014	305.95
423156	PACIFIC WELDING SUPPLIES	12/22/2014	23.00
423157	PRIORITY SHIRTS INC	12/22/2014	1,435.55
423158	REGGIE SHOWTIME JONES LLC	12/22/2014	1,000.00
423159	SANDLAND PROMOTIONS	12/22/2014	1,008.35
423160	SCARLETT, CLIFFORD	12/22/2014	125.00
423161	SCHOLASTIC BOOK CLUBS INC	12/22/2014	2,319.08
423162	SEATTLE METRO SOFTBALL UMPIRES	12/22/2014	442.76
423163	SNOWFLAKE DESIGNS	12/22/2014	1,913.25
423164	SNOWSHOE EVERGREEN INC	12/22/2014	553.25
423165	SOUTHEASTERN CAREER APPAREL IN	12/22/2014	2,655.58
423166	SPECIALTY FROZEN DISTIBUTING	12/22/2014	1,216.00
423167	STERLING ATHLETICS	12/22/2014	1,376.47
423168	SUNRISE DISTRIBUTION INC	12/22/2014	396.00
423169	TACOMA PIERCE CO VOLLEYBALL	12/22/2014	2,928.10
423170	TC SPAN AMERICA	12/22/2014	559.37
423171	TH DESIGNS	12/22/2014	702.00

Check Nbr	Vendor Name	Check Date	Check Amount
423172	WALMART SAMS CLUB	12/22/2014	1,851.06
423173	WESTERN WASH FOOTBALL OFFICIAL	12/22/2014	3,330.80
423174	WTS MEDIA	12/22/2014	74.92
423175	AUBURN MOUNTAINVIEW H S	12/22/2014	210.00
423176	AUBURN RIVERSIDE H S	12/22/2014	190.00
423177	CASCADE M S	12/22/2014	181.00
423178	CASCADE M S	12/22/2014	120.00
423179	OLYMPIC M S	12/22/2014	128.00
423180	ZARD, AMANDA AND GLENDALE CC -	12/22/2014	500.00
226	Computer	Check(s) For a Total of	892,443.27

0	Manual	Checks For a Total of	0.00
0	Wire Transfer	Checks For a Total of	0.00
0	ACH	Checks For a Total of	0.00
226	Computer	Checks For a Total of	892,443.27
Total For 226	Manual, Wire Tran, ACH & Computer	Checks	892,443.27
Less 0	Voided	Checks For a Total of	0.00
	Net Amount		892,443.27

F U N D S U M M A R Y

Fund	Description	Balance Sheet	Revenue	Expense	Total
10	General Fund	1,882.76	1,043.35	662,228.38	665,154.49
20	Capital Projects	0.00	0.00	172,755.14	172,755.14
40	ASB Fund	-269.58	1,237.50	52,236.72	53,204.64
70	Private Purpose	0.00	0.00	1,329.00	1,329.00

The following vouchers, as audited and certified by the Auditing Officer as required by RCW 42.24.080, and those expense reimbursement claims certified as required by RCW 42.24.090, are approved for payment. Those payments have been recorded on this listing which has been made available to the board.

As of December 22, 2014, the board, by a _____ vote, approves payments, totaling \$892,443.27. The payments are further identified in this document.

Total by Payment Type for Cash Account, US Bank of Washington:
Warrant Numbers 422955 through 423180, totaling \$892,443.27

Secretary _____	Board Member _____
Board Member _____	Board Member _____
Board Member _____	Board Member _____

Check Nbr	Vendor Name	Check Date	Check Amount
422955	*KING COUNTY SUPERIOR COURT	12/22/2014	1,882.76
422956	3 WIRE GROUP INC	12/22/2014	721.49
422957	410 QUARRY LLC	12/22/2014	198.21
422958	ADAMS, JENNIFER L	12/22/2014	500.00
422959	AGRISHOP INC	12/22/2014	67.04
422960	AMERICAN ACADEMY ~ GRADUATION	12/22/2014	12,381.00
422961	AMERICAN FLOORS & BLINDS	12/22/2014	179.44
422962	ANDERSON SPECIALTIES LLC	12/22/2014	750.08
422963	ANIXTER INC	12/22/2014	520.76
422964	APPLES TO GO	12/22/2014	4,662.00
422965	ARAMARK UNIFORM SERVICES	12/22/2014	43.57
422966	ASBO INTERNATIONAL	12/22/2014	438.00
422967	BAZALDUA, HONORATO	12/22/2014	11.35
422968	BLACKBURN, MARISSA M	12/22/2014	4.00
422969	BLUMENTHAL UNIFORMS & EQUIPMEN	12/22/2014	39.37
422970	BRINKS INC	12/22/2014	328.14
422971	BRYSON SALES & SERVICE	12/22/2014	382.54

Check Nbr	Vendor Name	Check Date	Check Amount
422972	CARPINITO BROTHERS INC	12/22/2014	413.00
422973	CARVIN CORPORATION	12/22/2014	1,017.38
422974	CASCADE BEAUTY COLLEGE	12/22/2014	195.27
422975	CDW GOVERNMENT INC	12/22/2014	457.54
422976	CHILDRENS INSTITUTE FOR LEARNI	12/22/2014	8,231.88
422977	CITY OF PACIFIC	12/22/2014	1,864.92
422978	COLBY, BARBARA	12/22/2014	6.00
422979	COLLEGE BOARD	12/22/2014	5,200.00
422980	COLLEGE BOARD WRO	12/22/2014	1,060.00
422981	CONSOLIDATED ELECTRICAL DIST I	12/22/2014	629.63
422982	CUBILLOS MORENO, GABRIELA	12/22/2014	240.13
422983	CUMMINS NW LLC	12/22/2014	673.91
422984	CUSTOM ELECTRIC & CONTROLS	12/22/2014	135.10
422985	Vendor Continued Check	12/22/2014	0.00
422986	DAIRY FRESH FARMS INC	12/22/2014	37,635.57
422987	DB SECURE SHRED	12/22/2014	134.34
422988	DELTA ELECTRIC MOTORS INC	12/22/2014	720.67
422989	DEPT OF ENTERPRISE SERVICES	12/22/2014	450.00
422990	DRUG EDUCATION SERVICES LLC	12/22/2014	78.00
422991	DRUG FREE BUSINESS	12/22/2014	93.00
422992	DYNAMIC LANGUAGE CENTER INC	12/22/2014	480.48
422993	EARL, REBECCA E	12/22/2014	150.00
422994	EASTBAY INC	12/22/2014	1,155.00
422995	ECOLAB INC	12/22/2014	306.00
422996	EDEN ADVANCED PEST TECHNOLOGIE	12/22/2014	104.03

Check Nbr	Vendor Name	Check Date	Check Amount
422997	EK BEVERAGE COMPANY	12/22/2014	1,425.50
422998	ELECTROCOM	12/22/2014	142.35
422999	EVELYN N PROBERT LITERACY CONS	12/22/2014	4,215.00
423000	FAIRFAX HOSPITAL INC	12/22/2014	5,250.00
423001	FEDERAL WAY RADIATOR & AUTOMOT	12/22/2014	120.13
423002	Vendor Continued Check	12/22/2014	0.00
423003	Vendor Continued Check	12/22/2014	0.00
423004	Vendor Continued Check	12/22/2014	0.00
423005	Vendor Continued Check	12/22/2014	0.00
423006	FERGUSON ENTERPRISES INC #3007	12/22/2014	2,268.45
423007	FOLLETT SCHOOL SOLUTIONS INC	12/22/2014	171.19
423008	FRAZIER, JEANETTE ELIZABETH	12/22/2014	350.00
423009	GARCIA, ANTHONY	12/22/2014	234.93
423010	GILDO REY PTA	12/22/2014	255.00
423011	GOODY MAN DISTRIBUTING INC	12/22/2014	2,556.63
423012	GRAINGER DEPT 810392688	12/22/2014	395.68
423013	GUARDIAN SECURITY SYSTEMS INC	12/22/2014	1,592.00
423014	HAMMOND ASHLEY VIOLINS	12/22/2014	10,236.68
423015	HAZELWOOD ELEM	12/22/2014	460.00
423016	HENDRICKSON ASSOCIATES LLC	12/22/2014	2,089.26
423017	HOBART SERVICE	12/22/2014	36.70
423018	HOLM, CYNTHIA	12/22/2014	1,519.28
423019	HONEYSETT, TERRIE ANN	12/22/2014	50.00
423020	HOPE & HELP COUNSELING AGENCY	12/22/2014	2,100.00
423021	HOUGHTON MIFFLIN HARCOURT	12/22/2014	2,800.00

Check Nbr	Vendor Name	Check Date	Check Amount
423022	INNOVAC	12/22/2014	1,314.00
423023	JUNIOR ACHIEVEMENT OF WASH	12/22/2014	585.00
423024	JW PEPPER & SON INC	12/22/2014	1,268.51
423025	KING, REYANNA MARIE JOSLYN	12/22/2014	225.00
423026	KING COUNTY DIRECTORS ASSN	12/22/2014	328.38
423027	KONICA MINOLTA BUSINESS SOLUTI	12/22/2014	4,017.54
423028	LDG AV LLC	12/22/2014	1,069.52
423029	LEKTAK, WILLIAM	12/22/2014	179.20
423030	LICKEY, BRITTNEY LYNN	12/22/2014	50.00
423031	MAXIM STAFFING SOLUTIONS	12/22/2014	2,726.79
423032	METRIX ENGINEERS LLC	12/22/2014	1,034.78
423033	MICONTROLS INC	12/22/2014	3,484.96
423034	Vendor Continued Check	12/22/2014	0.00
423035	MICRO COMPUTER SYSTEMS INC	12/22/2014	122,903.74
423036	MILES ABA SERVICES	12/22/2014	5,400.00
423037	MILL SUPPLY INC	12/22/2014	50.06
423038	MOTOR OIL SUPPLY INC	12/22/2014	1,862.93
423039	MUSIC & ARTS CENTER	12/22/2014	715.62
423040	NAVARRO, ANNETTE	12/22/2014	310.46
423041	NEWS TRIBUNE ADVERTISING	12/22/2014	982.80
423042	NW SCHOOL HEARING FOR HEARING	12/22/2014	3,700.00
423043	NW TEXTBOOK DEPOSITORY	12/22/2014	8,660.28
423044	OCCUPATIONAL HEALTH SERVICES	12/22/2014	250.00
423045	ORCA PACIFIC INC	12/22/2014	677.47
423046	OSMAN, MUNA	12/22/2014	3.00

Check Nbr	Vendor Name	Check Date	Check Amount
423047	OUTPATIENT PHYSICAL THERAPY &	12/22/2014	6,021.08
423048	PARKER PAINT MFG CO INC	12/22/2014	19.91
423049	PEARSON EDUCATION INC	12/22/2014	20,024.46
423050	PETRO CARD	12/22/2014	2,778.52
423051	PITNEY BOWES PRESORT SERVICES	12/22/2014	2,326.22
423052	PLUMMASTER INC	12/22/2014	3,820.68
423053	PNW FIRST	12/22/2014	2,000.00
423054	PREG O'DONNELL & GILLETT PLLC	12/22/2014	5,000.00
423055	PRIMARY CONCEPTS	12/22/2014	48.03
423056	PROGRESSUS THERAPY INC	12/22/2014	8,805.07
423057	PUGET SOUND ENERGY ELECTRIC	12/22/2014	113,411.43
423058	Vendor Continued Check	12/22/2014	0.00
423059	PUGET SOUND ENERGY NAT GAS	12/22/2014	57,431.51
423060	PUGET SOUND ESD	12/22/2014	595.00
423061	PUGET SOUND EDUCATIONAL SERVIC	12/22/2014	17,680.00
423062	REAGAN, MCKENNA	12/22/2014	175.00
423063	RELIABLE PARTS INC	12/22/2014	99.63
423064	RENTON CONCRETE RECYLERS LLC	12/22/2014	125.00
423065	ROCK CHIP GUYS LLC	12/22/2014	306.60
423066	RODRIGUEZ, MARTHA RAMOS	12/22/2014	9.00
423067	RWC INTERNATIONAL LTD INC	12/22/2014	133.84
423068	SANDLAND PROMOTIONS	12/22/2014	274.91
423069	SARDEN, TANYA J	12/22/2014	227.92
423070	SAXTON BRADLEY INC	12/22/2014	8,332.95
423071	SCARFF FORD	12/22/2014	60.20

Check Nbr	Vendor Name	Check Date	Check Amount
423072	SCHETKY NW SALES INC	12/22/2014	1,638.82
423073	SEATTLE CHILDRENS THEATRE	12/22/2014	600.00
423074	SHARP BUSINESS SYSTEMS	12/22/2014	99.96
423075	SOCIETY OF ST VINCENT DE PAUL,	12/22/2014	5,330.00
423076	SOLIANT HEALTH	12/22/2014	3,835.00
423077	SOOS CREEK WATER & SEWER DISTR	12/22/2014	3,268.56
423078	SOUTH KING EARLY INTERVENTION	12/22/2014	10,400.00
423079	SPRAGUE ISRAEL GILES INC	12/22/2014	4,189.50
423080	STAFF DEVELOPMENT FOR EDUCATOR	12/22/2014	6,120.00
423081	STANSELL GLASS INC	12/22/2014	335.34
423082	STATE AUDITOR'S OFFICE LEGIS B	12/22/2014	251.10
423083	SUPERIOR ENGINEERING SERVICES	12/22/2014	232.00
423084	SUPERIOR ENGINEERING SERVICES	12/22/2014	1,193.29
423085	SUPERIOR ENGINEERING SERVICES	12/22/2014	3,548.35
423086	SUPERIOR ENGINEERING SERVICES	12/22/2014	2,764.88
423087	SUPPLEMENTAL HEALTH CARE	12/22/2014	3,780.00
423088	TED BROWN MUSIC COMPANY	12/22/2014	100.64
423089	THUNDERING OAK ENTERPRISES INC	12/22/2014	1,762.95
423090	TOMYS INC	12/22/2014	4,818.15
423091	TOP ECHELON CONTRACTING INC	12/22/2014	14,983.46
423092	TRANSACT COMMUNICATIONS INC	12/22/2014	684.38
423093	TRANSOURCE	12/22/2014	341.86
423094	TROXELL COMMUNICATIONS INC	12/22/2014	300.47
423095	UNIFIRST CORPORATION	12/22/2014	741.93
423096	USA MOBILITY WIRELESS INC	12/22/2014	354.67

Check Nbr	Vendor Name	Check Date	Check Amount
423097	WARREN, ELEANOR J	12/22/2014	86.63
423098	Vendor Continued Check	12/22/2014	0.00
423099	WASH FLORAL SERVICE INC	12/22/2014	985.66
423100	WASH INDUSTRIAL TECH EDUC ASSN	12/22/2014	230.00
423101	WASH INTERSCHOLASTIC ACTIVITIE	12/22/2014	12,576.24
423102	WASH SCHOOL PERSONNEL ASSN	12/22/2014	450.00
423103	WASH TRACTOR INC	12/22/2014	602.75
423104	WASWUG/WSIPC	12/22/2014	1,000.00
423105	WATER DISTRICT #111	12/22/2014	3,985.04
423106	WESTERN BUS SALES	12/22/2014	158.95
423107	WEST COAST PLATEN COMPANY	12/22/2014	79.29
423108	WILBUR ELLIS COMPANY	12/22/2014	73.58
423109	WOLFE, UNA PILIALOHA	12/22/2014	13,750.00
423110	WORLD LANGUAGE SERVICES LLC	12/22/2014	2,642.16
423111	WSIPC NW ESD FISCAL AGENT	12/22/2014	22,541.50
423112	APOLLO MECHANICAL CONTRACTORS	12/22/2014	1,007.03
423113	BARGREEN ELLINGSON INC	12/22/2014	16,809.94
423114	DELL MARKETING LP % DELL USA L	12/22/2014	24,755.77
423115	GOVCONNECTION INC	12/22/2014	318.91
423116	KING COUNTY DIRECTORS ASSN	12/22/2014	29,241.98
423117	MCKINNEY TRAILERS & CONTAINERS	12/22/2014	105.39
423118	MICRO COMPUTER SYSTEMS INC	12/22/2014	75,766.66
423119	NAC ARCHITECTURE INC	12/22/2014	2,200.00
423120	PROLIPHIX INC	12/22/2014	6,525.17
423121	SHOCKEY PLANNING GROUP INC	12/22/2014	1,365.30

Check Nbr	Vendor Name	Check Date	Check Amount
423122	SOUND ENERGY SYSTEMS	12/22/2014	7,082.46
423123	ULINE	12/22/2014	147.53
423124	WELSH COMMISSIONING GROUPS INC	12/22/2014	7,429.00
423125	ALL SEASON CARPET & UPHOLSTERY	12/22/2014	250.00
423126	AUBURN HIGH SCHOOL	12/22/2014	718.68
423127	AUBURN FOOD BANK	12/22/2014	65.00
423128	AUBURN RIVERSIDE H S BAND PARE	12/22/2014	275.00
423129	AUBURN SCHOOL DIST 408 **	12/22/2014	1,237.50
423130	BROADWAY AT THE PARAMOUNT	12/22/2014	4,100.50
423131	COCA COLA REFRESHMENTS USA INC	12/22/2014	1,337.67
423132	CONTINENTAL ATHLETIC SUPPLY	12/22/2014	225.17
423133	COSTCO	12/22/2014	3,368.02
423134	DECARTERET DESIGNS LLC	12/22/2014	964.00
423135	DISPLAY & COSTUME SUPPLY	12/22/2014	121.87
423136	DUSTIN DONATION FUND	12/22/2014	489.99
423137	DYSART, TRACI	12/22/2014	328.21
423138	FAT BLACK SQUIRREL STUDIO	12/22/2014	800.00
423139	GREEN RIVER MUSIC EDUCATORS AS	12/22/2014	105.00
423140	HELY & WEBER	12/22/2014	54.95
423141	HENRY SCHEIN INC	12/22/2014	1,566.63
423142	IMAGE MASTERS INC	12/22/2014	261.38
423143	KEY CLUB INTERNATIONAL	12/22/2014	1,724.97
423144	LIDS TEAM SPORTS	12/22/2014	1,116.91
423145	Vendor Continued Check	12/22/2014	0.00
423146	Vendor Continued Check	12/22/2014	0.00

Check Nbr	Vendor Name	Check Date	Check Amount
423147	LOTZARAMA INC RICHES 5 STAR PIZ	12/22/2014	1,145.90
423148	M & R SALES	12/22/2014	1,890.00
423149	MARCHANT, TOM	12/22/2014	40.32
423150	MEREDITH, JAN	12/22/2014	660.00
423151	NEW HORIZON FUNDRAISING	12/22/2014	254.00
423152	NW FUNDRAISING	12/22/2014	5,575.19
423153	OUTHOUSE SCREENPRINTING	12/22/2014	269.19
423154	PACIFIC NW THEATRE ASSN INC	12/22/2014	42.10
423155	PACIFIC PUBLISHING COMPANY	12/22/2014	305.95
423156	PACIFIC WELDING SUPPLIES	12/22/2014	23.00
423157	PRIORITY SHIRTS INC	12/22/2014	1,435.55
423158	REGGIE SHOWTIME JONES LLC	12/22/2014	1,000.00
423159	SANDLAND PROMOTIONS	12/22/2014	1,008.35
423160	SCARLETT, CLIFFORD	12/22/2014	125.00
423161	SCHOLASTIC BOOK CLUBS INC	12/22/2014	2,319.08
423162	SEATTLE METRO SOFTBALL UMPIRES	12/22/2014	442.76
423163	SNOWFLAKE DESIGNS	12/22/2014	1,913.25
423164	SNOWSHOE EVERGREEN INC	12/22/2014	553.25
423165	SOUTHEASTERN CAREER APPAREL IN	12/22/2014	2,655.58
423166	SPECIALTY FROZEN DISTIBUTING	12/22/2014	1,216.00
423167	STERLING ATHLETICS	12/22/2014	1,376.47
423168	SUNRISE DISTRIBUTION INC	12/22/2014	396.00
423169	TACOMA PIERCE CO VOLLEYBALL	12/22/2014	2,928.10
423170	TC SPAN AMERICA	12/22/2014	559.37
423171	TH DESIGNS	12/22/2014	702.00

Check Nbr	Vendor Name	Check Date	Check Amount
423172	WALMART SAMS CLUB	12/22/2014	1,851.06
423173	WESTERN WASH FOOTBALL OFFICIAL	12/22/2014	3,330.80
423174	WTS MEDIA	12/22/2014	74.92
423175	AUBURN MOUNTAINVIEW H S	12/22/2014	210.00
423176	AUBURN RIVERSIDE H S	12/22/2014	190.00
423177	CASCADE M S	12/22/2014	181.00
423178	CASCADE M S	12/22/2014	120.00
423179	OLYMPIC M S	12/22/2014	128.00
423180	ZARD, AMANDA AND GLENDALE CC -	12/22/2014	500.00
226	Computer	Check(s) For a Total of	892,443.27

0	Manual	Checks For a Total of	0.00
0	Wire Transfer	Checks For a Total of	0.00
0	ACH	Checks For a Total of	0.00
226	Computer	Checks For a Total of	892,443.27
Total For 226	Manual, Wire Tran, ACH & Computer	Checks	892,443.27
Less 0	Voided	Checks For a Total of	0.00
	Net Amount		892,443.27

F U N D S U M M A R Y

Fund	Description	Balance Sheet	Revenue	Expense	Total
10	General Fund	1,882.76	1,043.35	662,228.38	665,154.49
20	Capital Projects	0.00	0.00	172,755.14	172,755.14
40	ASB Fund	-269.58	1,237.50	52,236.72	53,204.64
70	Private Purpose	0.00	0.00	1,329.00	1,329.00

The following vouchers, as audited and certified by the Auditing Officer as required by RCW 42.24.080, and those expense reimbursement claims certified as required by RCW 42.24.090, are approved for payment. Those payments have been recorded on this listing which has been made available to the board.

As of December 22, 2014, the board, by a _____ vote, approves payments, totaling \$261,887.57. The payments are further identified in this document.

Total by Payment Type for Cash Account, US Bank Wire Transfers:

Wire Transfer Payments 201400198 through 201400284, totaling \$261,887.57

Secretary _____	Board Member _____
Board Member _____	Board Member _____
Board Member _____	Board Member _____

Check Nbr	Vendor Name	Check Date	Check Amount
201400198	STAPLES ADVANTAGE	12/22/2014	16,537.31
201400199	STAPLES ADVANTAGE	12/22/2014	4.72
201400209	CITY OF AUBURN UTILITIES	12/22/2014	46,437.82
201400211	UNITED PARCEL SERVICE	12/22/2014	91.44
201400218	GOSNEY MOTOR PARTS INC	12/22/2014	94.47
201400219	GOSNEY MOTOR PARTS INC	12/22/2014	1,167.15
201400220	REXEL INC	12/22/2014	54.11
201400221	EASTSIDE SAW & SALES INC	12/22/2014	603.07
201400229	KDL HARDWARE SUPPLY INC	12/22/2014	850.79
201400230	COASTWIDE LABORATORIES	12/22/2014	226.49
201400231	MSC INDUSTRIAL SUPPLY CO	12/22/2014	20.61
201400233	SOUND PUBLISHING INC	12/22/2014	82.88
201400234	COSTCO	12/22/2014	1,462.38
201400235	EASTBAY INC	12/22/2014	1,417.08
201400236	OFFICE DEPOT INC ACCT#8011 073	12/22/2014	221.69
201400237	GOSNEY MOTOR PARTS INC	12/22/2014	552.44
201400238	PIZZA TIME	12/22/2014	469.77

Check Nbr	Vendor Name	Check Date	Check Amount
201400239	WEST COAST AWARDS & ATHLETICS	12/22/2014	2,295.99
201400240	DVERSIFIED GYMNASTICS & SPORTS	12/22/2014	657.00
201400241	PACIFIC PUBLISHING COMPANY	12/22/2014	471.06
201400242	WASH FLORAL SERVICE INC	12/22/2014	194.95
201400243	REXEL INC	12/22/2014	739.38
201400244	MT RAINIER GREENERY	12/22/2014	1,283.25
201400245	AT & T	12/22/2014	226.14
201400246	CEDAR GROVE ORGANICS RECYCLING	12/22/2014	2,584.85
201400247	GOSNEY MOTOR PARTS INC	12/22/2014	1,305.53
201400248	CENTURY LINK	12/22/2014	13,966.64
201400249	CENTURY LINK BUSINESS SERVICES	12/22/2014	602.50
201400250	CENTURY LINK	12/22/2014	36,494.22
201400251	CITY OF AUBURN UTILITIES	12/22/2014	13,434.34
201400252	REPUBLIC SERVICES #176	12/22/2014	3,947.03
201400253	SPRINT	12/22/2014	99.99
201400254	VERIZON WIRELESS	12/22/2014	211.39
201400255	WASTE MANAGEMENT RECYCLE COMPA	12/22/2014	2,154.77
201400256	KONICA MINOLTA BUSINESS SOLUTI	12/22/2014	84,033.66
201400272	OFFICE DEPOT INC ACCT#8011 073	12/22/2014	136.73
201400279	KING COUNTY DIRECTORS ASSN	12/22/2014	11,874.11
201400279	KING COUNTY DIRECTORS ASSN	12/22/2014	533.81
201400280	MILLER PAINT CO	12/22/2014	951.00
201400281	DAKTRONICS INC	12/22/2014	2,206.44
201400282	MUSIC THEATRE INTERNATIONAL	12/22/2014	400.00
201400283	NATIONAL HIGH SCHOOL CHEER CHA	12/22/2014	8,546.00

Check Nbr	Vendor Name	Check Date	Check Amount
201400284	BELLAIR CHARTERS	12/22/2014	2,242.57

43	Wire Transfer Check(s) For a Total of	261,887.57
----	---------------------------------------	------------

0	Manual	Checks For a Total of	0.00
43	Wire Transfer	Checks For a Total of	261,887.57
0	ACH	Checks For a Total of	0.00
0	Computer	Checks For a Total of	0.00
Total For 43	Manual, Wire Tran, ACH & Computer	Checks	261,887.57
Less 0	Voided	Checks For a Total of	0.00
	Net Amount		261,887.57

F U N D S U M M A R Y

Fund	Description	Balance Sheet	Revenue	Expense	Total
10	General Fund	8,079.52	0.00	231,075.31	239,154.83
40	ASB Fund	0.00	0.00	22,732.74	22,732.74

The following vouchers, as audited and certified by the Auditing Officer as required by RCW 42.24.080, and those expense reimbursement claims certified as required by RCW 42.24.090, are approved for payment. Those payments have been recorded on this listing which has been made available to the board.

As of December 22, 2014, the board, by a _____ vote, approves payments, totaling \$270,941.06. The payments are further identified in this document.

Total by Payment Type for Cash Account, AP Direct Dep Settlement Accou:
ACH Numbers 141500798 through 141500908, totaling \$270,941.06

Secretary _____	Board Member _____
Board Member _____	Board Member _____
Board Member _____	Board Member _____

Check Nbr	Vendor Name	Check Date	Check Amount
141500798	AARSTAD, JON DOUGLAS	12/22/2014	11.79
141500799	ACUNA, ANDREA LOUISE	12/22/2014	42.26
141500800	AUBURN SCHOOL DIST REVOLVING F	12/22/2014	883.00
141500801	BALL, LORETTA D	12/22/2014	6.98
141500802	BARLOW, COLLEEN MARIE	12/22/2014	1,318.77
141500803	BARLOW, LELA V	12/22/2014	27.55
141500804	BELL, KAREN	12/22/2014	167.80
141500805	BERG, BARBARA DIANE	12/22/2014	156.63
141500806	BLANSFIELD, CYNTHIA RENEE	12/22/2014	252.48
141500807	BLOUNT, DENITA M	12/22/2014	39.96
141500808	BOCK, CHRISTINA MARIE	12/22/2014	61.49
141500809	BROWN, KELLY	12/22/2014	30.32
141500810	BURT, TIFFANY ANN	12/22/2014	37.35
141500811	BUTLER, MARK M	12/22/2014	500.00
141500812	CAIRNEY, DAWNE MARIE	12/22/2014	86.00
141500813	CAMPBELL-AIKENS, JANIS GAIL	12/22/2014	18.36
141500814	CANO, JILLIAN	12/22/2014	153.66

Check Nbr	Vendor Name	Check Date	Check Amount
141500815	CARLSON, HANNA BORGHILD	12/22/2014	488.00
141500816	COLE, BRANDI NOELLE	12/22/2014	53.29
141500817	COWAN, AARON ROBERT-JOHN	12/22/2014	500.00
141500818	CRATER, LAUREN BREANNE	12/22/2014	500.00
141500819	CRIDDLE, JAYNE	12/22/2014	151.11
141500820	CUMBERLAND THERAPY SERVICES LL	12/22/2014	4,080.00
141500821	DANIELS, DENISE CLARISE	12/22/2014	183.06
141500822	DOZIER, ALETHEA CARLOS	12/22/2014	605.64
141500823	DUNAWAY, EDDIE L	12/22/2014	26.54
141500824	FAWVER, RICHARD ALLEN	12/22/2014	63.68
141500825	FOOD SERVICES OF AMERICA	12/22/2014	981.76
141500826	FOOD SERVICES OF AMERICA *	12/22/2014	106,776.57
141500827	FOOD SERVICES OF AMERICA **	12/22/2014	13,691.63
141500828	Vendor Continued Check	12/22/2014	0.00
141500829	FOOD SERVICES OF AMERICA ***	12/22/2014	10,611.40
141500830	FOREMAN, ALAN LYNN	12/22/2014	50.00
141500831	GALLAGHER, LINDSEY KAY	12/22/2014	500.00
141500832	HAMMER, EVELYN I	12/22/2014	64.41
141500833	HETTERLY, ELAINE M	12/22/2014	18.26
141500834	HOGG, ELAINE M	12/22/2014	91.26
141500835	HOKSBERGEN, MARILYN J	12/22/2014	5.82
141500836	HUGHES, SHARON	12/22/2014	29.18
141500837	IBBETSON THERAPEUTIC SERVICES	12/22/2014	9,588.50
141500838	JACOBS, LORI DAWN	12/22/2014	45.67
141500839	JEFFREYS, BRENDAN THOMAS	12/22/2014	79.22

Check Nbr	Vendor Name	Check Date	Check Amount
141500840	JOHNSON, ISAAH DAVID	12/22/2014	43.76
141500841	JOHNSON, SHAWN M	12/22/2014	281.00
141500842	KIILSGAARD, LESLIE LOUISE	12/22/2014	141.03
141500843	KIM, MIRA	12/22/2014	25.87
141500844	KING, DEYANNA JO	12/22/2014	6.49
141500845	KNAPP, BARBARA JEAN	12/22/2014	11.00
141500846	LADAGE, ADAM LYNN	12/22/2014	308.67
141500847	LAM, TAN VAN	12/22/2014	10.47
141500848	LASKEY, SAMANTHA MEHAFFEY	12/22/2014	50.00
141500849	MASON, JERI LYNN	12/22/2014	69.94
141500850	MAUCOTEL, JEANEE	12/22/2014	24.75
141500851	MAYER, MARGARET S	12/22/2014	82.32
141500852	MCDERMOTT, THOMAS J	12/22/2014	151.71
141500853	MCGRAW, JODI LEA	12/22/2014	27.45
141500854	MEEKER-CLARK, MARY L	12/22/2014	260.08
141500855	MEINHART, DORIN JANE	12/22/2014	57.20
141500856	MITCHELL, CYNTHIA A	12/22/2014	42.95
141500857	MORRIS, HEIDI MICHELLE	12/22/2014	65.04
141500858	MUXEN, ASHLEA RAE	12/22/2014	273.50
141500859	NESPER, BRENNIA LOUISE	12/22/2014	42.84
141500860	OLSON, KEVIN PATRICK	12/22/2014	500.00
141500861	PARSONS, THOMAS JAMES	12/22/2014	500.00
141500862	PAULSON, AMANDA LYNN	12/22/2014	410.00
141500863	PETER, CATHERINE MARGARET	12/22/2014	5.90
141500864	PICATTI-BAKER, MOLLY KATHRYN	12/22/2014	250.00

Check Nbr	Vendor Name	Check Date	Check Amount
141500865	ROGERS, STACEY KATHLEEN O.	12/22/2014	193.44
141500866	RUPP, TERI KAYE	12/22/2014	7.95
141500867	SAMUELSON, JENNIFER M	12/22/2014	38.47
141500868	SAXON, JAN K	12/22/2014	19.43
141500869	SCHUMAN, SUSAN MARIE	12/22/2014	500.00
141500870	SENGER, CANDY DAWN	12/22/2014	278.80
141500871	SHEEHAN, CANDY ANN	12/22/2014	34.97
141500872	SHU-MINUTOLI, KAREN	12/22/2014	33.04
141500873	SPENCER JR, ARTHUR LOUIS	12/22/2014	50.00
141500874	SUNBELT STAFFING LLC	12/22/2014	7,068.75
141500875	TANIGUCHI, ANGELA SUZANNE	12/22/2014	90.00
141500876	Vendor Continued Check	12/22/2014	0.00
141500877	US BANK CORP PAYMENT SYSTEMS P	12/22/2014	47,264.71
141500878	US BANK CORP PAYMENT SYSTEM TR	12/22/2014	3,629.04
141500879	US BANK CTE PCARDS	12/22/2014	12,133.95
141500880	WAGNER, VICKI	12/22/2014	138.04
141500881	WICKSTROM, ERIN L	12/22/2014	1,871.00
141500882	WILSON, NOLA RAE	12/22/2014	150.53
141500883	TECHNOLOGY EXPRESS	12/22/2014	7,338.24
141500884	US BANK CORP PAYMENT SYSTEMS P	12/22/2014	879.17
141500885	Vendor Continued Check	12/22/2014	0.00
141500886	AUBURN SENIOR HIGH IMPREST	12/22/2014	4,301.00
141500887	BALL, KATHERINE A	12/22/2014	52.13
141500888	BOWLER, DONNA LOU VON	12/22/2014	30.85
141500889	DAVIS, AMBER A	12/22/2014	66.28

Check Nbr	Vendor Name	Check Date	Check Amount
141500890	Vendor Continued Check	12/22/2014	0.00
141500891	FOOD SERVICES OF AMERICA	12/22/2014	3,860.84
141500892	GRIMM, LORI LYNN	12/22/2014	115.65
141500893	HUNTER, PILAR ALICIA	12/22/2014	14.17
141500894	JONES, ROBERT CHARLES	12/22/2014	75.11
141500895	KERR, WARREN DOUGLAS	12/22/2014	90.84
141500896	LEWIS, STEVEN CHRISTOPHER	12/22/2014	69.61
141500897	LINDGREN, SHARON JO	12/22/2014	28.65
141500898	ONISHI, CHRISTINE IDA	12/22/2014	119.37
141500899	PAYNE, STEVEN JAMES	12/22/2014	50.88
141500900	PIZZA TIME	12/22/2014	762.72
141500901	RODRIGUEZ, JESSE ANN	12/22/2014	10.69
141500902	SAARENAS, ROBYN NEIGEL	12/22/2014	175.20
141500903	SCOFIELD, CAROL AALAND	12/22/2014	37.58
141500904	Vendor Continued Check	12/22/2014	0.00
141500905	US BANK CORP PAYMENT SYSTEMS P	12/22/2014	15,164.39
141500906	US BANK CORP PAYMENT SYSTEM TR	12/22/2014	6,819.76
141500907	WICKSTROM, SCOTT	12/22/2014	36.82
141500908	US BANK CORP PAYMENT SYSTEMS P	12/22/2014	717.62

111 ACH

Check(s) For a Total of

270,941.06

0	Manual	Checks For a Total of	0.00
0	Wire Transfer	Checks For a Total of	0.00
111	ACH	Checks For a Total of	270,941.06
0	Computer	Checks For a Total of	0.00
Total For 111	Manual, Wire Tran, ACH & Computer Checks		270,941.06
Less 0	Voided	Checks For a Total of	0.00
	Net Amount		270,941.06

F U N D S U M M A R Y

Fund	Description	Balance Sheet	Revenue	Expense	Total
10	General Fund	681.44	0.00	229,442.05	230,123.49
20	Capital Projects	0.00	0.00	8,217.41	8,217.41
40	ASB Fund	-84.77	0.00	31,967.31	31,882.54
70	Private Purpose	0.00	0.00	717.62	717.62

AUBURN SCHOOL DISTRICT NO. 408

FINANCIAL STATEMENTS
FOR
NOVEMBER 2014

AUBURN SCHOOL DISTRICT NO. 408
MONTHLY FINANCIAL REPORTS
TABLE OF CONTENTS

- I. Combined Balance Sheet
 - A. Governmental Funds
 - B. Trust Funds and Account Groups
- II. Budget Status Reports
 - A. General Fund
 - B. Transportation Vehicle Fund
 - C. Capital Projects Fund
 - D. Debt Service Fund
 - E. ASB Fund
 - 1. High Schools
 - 2. Middle Schools
- III. Private Purpose Trust Fund Statement
- IV. NBN Employee Benefits Trust Fund Statement
- V. Local Grants

AUBURN SCHOOL DISTRICT NO. 408
BALANCE SHEETS - GOVERNMENTAL FUNDS
November 30, 2014

	GENERAL	TRANSPORT VEHICLE	CAPITAL PROJECTS	DEBT SERVICE	ASB
ASSETS					
Cash and cash equivalents	15,600,126	2,165,142	65,291,946	14,461,793	1,794,251
Restricted Cash	29,562	3,630	127,335	39,576	5,774
Property taxes receivable	1,119,717	-14	194,445	574,309	
Accounts receivable	1,118,834				0
Interest receivable	0	0	0	0	0
Due from other funds	-6,900	0	0	0	0
Due from other governments	-301,955		69,840		
Inventory of supplies	365,903				
Prepays	0				0
Total Assets	17,925,286	2,168,758	65,683,566	15,075,678	1,800,025
LIABILITIES and EQUITY					
Liabilities:					
Accounts payable	1,626,141		3,079		15,017
Estimated Unemployment Payable	26,506				
Due to other governments	12,691	1,553	54,476	16,978	2,477
Due to other funds	0		0		-6,900
Deferred revenue	1,119,717	-14	202,208	574,309	0
Total Liabilities	2,785,055	1,539	259,763	591,287	10,594
Equity:					
Non Spendable Fund Bal--Inven	444,925				671
Restricted for Food Services	2,096,940				
Restricted from Bond Proceeds			41,540,395		
Restricted from Levy Proceeds			6,786,595		
Restricted from Impact Fees			720,476		
Restricted for Fund Purpose		1,415,645			1,788,760
Restricted to Debt Service				1,655,164	
Assigned to Contingencies	300,000				
Assigned to Other Purposes	1,800,000				
Assigned To Fund Purposes		751,574	16,376,337	12,829,227	
Unassigned Fund Balance	10,498,365				
Total Equity	15,140,231	2,167,219	65,423,803	14,484,391	1,789,431
Total Liabilities and Equity	17,925,286	2,168,758	65,683,566	15,075,678	1,800,025

AUBURN SCHOOL DISTRICT NO. 408
BALANCE SHEETS - TRUST FUNDS AND ACCOUNT GROUPS
November 30, 2014

TRUST FUNDS		ACCOUNT GROUPS	
PRIV PURP TRUST	NBN EMPLOY BENEFITS	GENERAL FIXED ASSETS	GENERAL LONG-TERM DEBT

ASSETS

Cash and cash equivalents	568,162	109,156		
Restricted Cash	2,773	812		
Due From Other Funds	0	138		
Accounts receivable				
Interest receivable	0	0		
Fixed assets			281,761,320	
Other debits:				
Amount available in Debt Service Fund				14,484,391
Amount to be provided for retirement of general long-term obligations				119,194,837
Total Assets	570,935	110,105	281,761,320	133,679,228

LIABILITIES and EQUITY

Liabilities:

Accounts Payable	7	-9,193		
Compensated absences payable				2,764,228
Due to other governments	1,187	347		
Due To Other Funds		138		
General obligation bonds payable				130,915,000
Total Liabilities	1,194	-8,708	0	133,679,228

Equity:

Investment in general fixed assets			281,761,320	
Fund balances:				
Assigned To Fund Purposes	569,742	118,813		
Total Equity	569,742	118,813	281,761,320	0
Total Liabilities and Equity	570,935	110,105	281,761,320	133,679,228

<p align="center">Auburn School District No. 408 General Fund Budget Status Summary</p>	
---	--

	REVENUE			EXPENDITURES			FUND BALANCE
Fiscal Year 2014 - 15	Average Cum %	Actual Cum %	Actual Monthly	Average Cum %	Actual Cum %**	Monthly Amount	Beginning 9,416,432
September	5.63%	5.63%	9,600,271	6.68%	11.23%	11,493,198	7,523,505
October	19.93%	19.93%	24,381,007	14.81%	18.99%	13,998,540	17,905,973
November	26.57%	27.23%	12,457,337	23.00%	26.78%	14,097,667	15,140,231
December							
January							
February							
March							
April							
May							
June							
July							
August							
			Revenue			Expenditure	Fund Balance
Anticipated - First Budget			170,538,646			172,136,511	8,435,466
Actual - At Fiscal Year End							
** Includes encumbrances.							

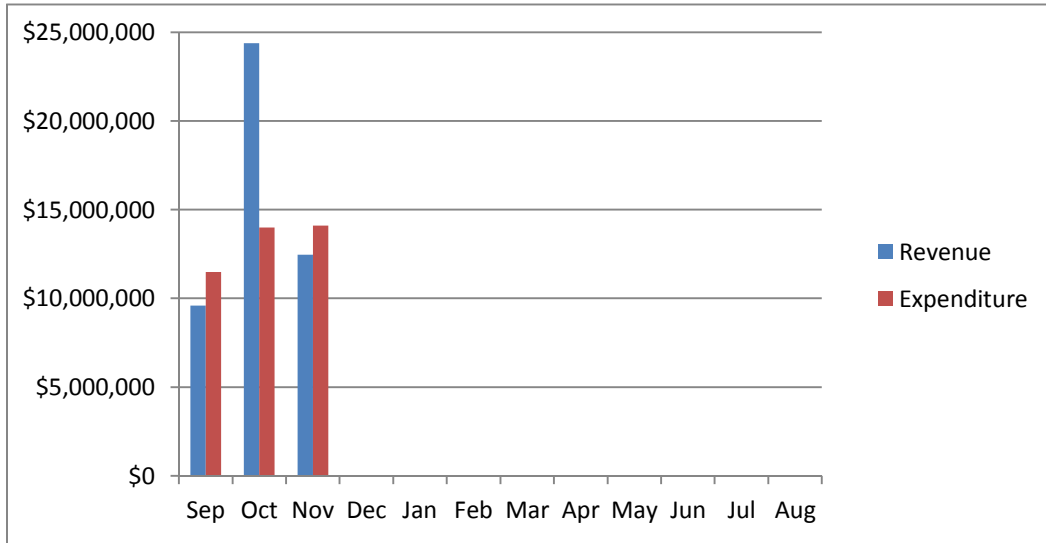
	REVENUE			EXPENDITURES			FUND BALANCE
Fiscal Year 2013-14	Average Cum %	Actual Cum %	Actual Monthly	Average Cum %	Actual Cum %**	Monthly Amount	Beginning 10,133,329
September	6.76%	6.51%	9,950,137	11.19%	11.15%	11,113,769	8,969,697
October	19.63%	20.36%	21,159,285	19.66%	19.15%	13,247,446	16,881,536
November	26.73%	27.23%	10,494,071	27.00%	26.90%	12,563,614	14,811,993
December	34.26%	34.39%	10,933,571	34.53%	34.40%	12,617,333	13,128,231
January	41.53%	41.28%	10,526,689	42.31%	41.97%	12,539,519	11,115,401
February	48.89%	48.60%	11,182,251	50.04%	49.91%	12,981,238	9,316,414
March	56.54%	56.29%	11,749,451	57.80%	57.60%	12,820,932	8,244,933
April	70.37%	71.31%	22,945,138	66.38%	65.65%	13,411,868	17,778,203
May	78.49%	79.14%	11,965,259	74.16%	73.50%	13,119,004	16,624,458
June	83.94%	84.41%	8,057,108	81.77%	82.10%	13,808,972	10,872,594
July	91.49%	92.10%	11,749,445	89.63%	90.25%	13,713,359	8,908,680
August	100.07%	101.48%	14,319,827	97.25%	98.14%	14,002,912	9,225,640
			Revenue			Expenditure	Fund Balance
Anticipated - First Budget			152,776,040			158,891,993	4,808,633
Actual - At Fiscal Year End			155,029,778			155,939,966	9,416,432

** Includes encumbrances.

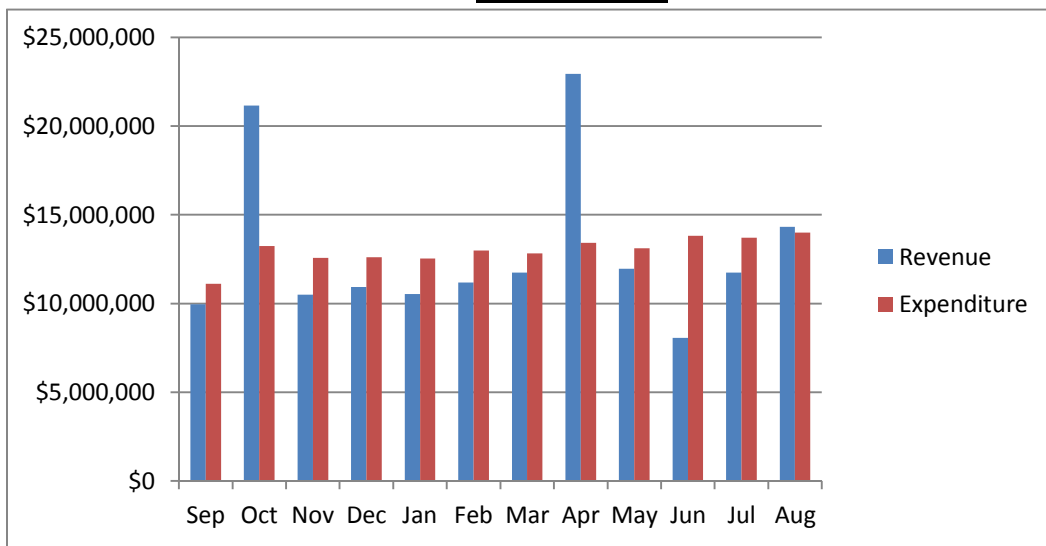
[illegible]

AUBURN SCHOOL DISTRICT No. 408 GENERAL FUND

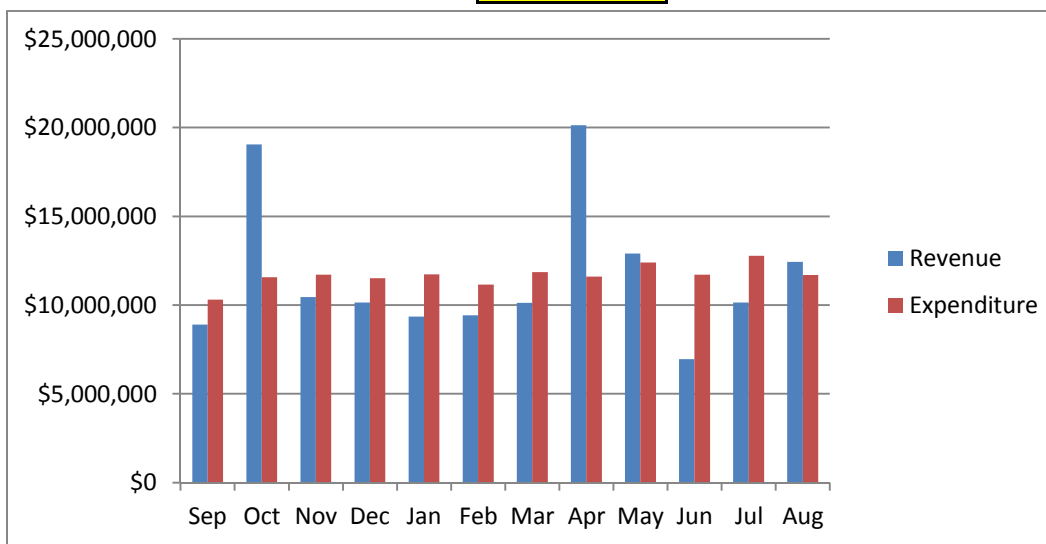
2014 - 15



2013-14



2012-13



Auburn School District No. 408
General Fund Budget Status
For the Month of November, 2014

	Annual Budget	Actual For Month	Total For Year	Encumbrance	Balance	Percent
TOTAL BEGINNING FUND BALANCE	\$ 10,033,331		9,416,432			
REVENUES AND OTHER FINANCING SOURCES						
1000 Local Taxes	33,794,082	2,600,288	14,697,900		19,096,182	43.49%
2000 Local Non-Tax	7,187,666	1,164,467	1,687,669		5,499,997	23.48%
3000 State, General Purpose	90,896,758	5,444,055	21,318,241		69,578,517	23.45%
4000 State, Special Purpose	22,611,696	1,252,117	5,162,617		17,449,079	22.83%
5000 Federal, General Purpose	8,383	-	-		8,383	0.00%
6000 Federal, Special Purpose	15,325,069	1,729,443	2,176,768		13,148,301	14.20%
7000 Revenues from Other District	612,292	266,967	266,967		345,325	43.60%
8000 Revenues from Other Agencies	102,700	-	-		102,700	0.00%
9000 Other Financing Sources	-	-	187		(187)	0.00%
Total Revenues & Other Finance Sources	170,538,646	12,457,337	45,310,349	-	125,228,297	26.57%
EXPENDITURES						
00 Regular Instruction	94,332,618	7,973,853	22,973,327	1,594,015	69,765,276	26.04%
10 Federal Stimulus	2,218,947	55,267	136,891	143,260	1,938,797	12.63%
20 Special Ed Instruction	19,665,078	1,725,369	4,811,454	1,507,313	13,346,311	32.13%
30 Vocational Instruction	6,860,021	541,370	1,463,947	384,448	5,011,626	26.94%
50&60 Compensatory Education	11,438,745	839,194	2,362,037	369,123	8,707,585	23.88%
70 Other Instructional Pgms	2,827,040	72,037	193,678	96,748	2,536,614	10.27%
80 Community Services	1,307,238	71,363	177,304	22,752	1,107,183	15.30%
90 Support Services	33,486,824	2,819,213	7,467,913	4,223,425	21,795,485	34.91%
Total Expenditures	172,136,511	14,097,667	39,586,550	8,341,084	124,208,877	23.00%
Excess Revenues/Other Financing Sources						
Over (under) Expend & Oth Financing Uses	(1,597,865)	(1,640,330)	5,723,799			
Total Ending Fund Balance	\$ 8,435,466		15,140,231			
Ending Fund Balance Accounts						
GL 821 Restricted for Carryovers						
GL 828 Restricted for Food Services	-		2,096,940			
GL 840 Nonspendable Fund Bal - Inv	-		444,925			
GL 875 Unrsrvd Dsgntd-Conting	-		300,000			
GL 888 Assigned to Other Purposes	-		1,800,000			
GL 890 UnRsrvd Undsgntd Fnd Bal	8,435,466		10,498,365			
Total Ending Fund Balance	\$ 8,435,466		\$ 15,140,231			

Auburn School District No. 408
Capital Projects Fund Budget Status
For the Month of November, 2014

	Annual Budget	Actual For Month	Total For Year	Encumbrance	Balance	Percent
TOTAL BEGINNING FUND BALANCE	\$ 74,402,644		\$ 69,083,979			
REVENUES AND OTHER FINANCING SOURCES						
1000 Local Taxes	6,261,416	360,487	2,027,012		4,234,404	32.37%
2000 Local Non-Tax	1,857,503	33,042	137,269		1,720,234	7.39%
3000 State, General Purpose		-	-		-	0.00%
4000 State, Special Purpose		-	-		-	0.00%
5000 Federal, General Purpose		-	-		-	0.00%
6000 Federal, Special Purpose		-	-		-	0.00%
7000 Revenues from Other District		-	-		-	0.00%
8000 Revenues from Other Agencies		-	-		-	0.00%
9000 Other Financing Sources	-	-	-		-	0.00%
Total Revenues & Other Financing Sources	8,118,919	393,528	2,164,281	-	5,954,638	26.66%
EXPENDITURES						
10 Sites	3,013,535	16,170	16,170	-	2,997,365	0.54%
20 Buildings	43,774,497	3,011,417	5,095,796	1,808,015	36,870,685	15.77%
30 Equipment	3,000,000	39,316	225,570	148,543	2,625,886	12.47%
40 Energy	-	259,307	486,921	323,345	(810,266)	0.00%
50 Sales & Lease Expenditures		-	-	-	-	0.00%
60 Bond Issuance Expenditures		-	-	-	-	0.00%
90 Debt		-	-	-	-	0.00%
Total Expenditures	49,788,032	3,326,209	5,824,457	2,279,903	41,683,671	16.28%
Excess Revenues/Other Financing Sources Over (under) Expend. & Oth Financing Uses	(41,669,113)	(2,932,681)	(3,660,176)			
Total Ending Fund Balance	\$ 32,733,531		\$ 65,423,803			
Ending Fund Balance Accounts						
GL 861 Restricted from Bond Proceeds	17,589,891		41,540,395			
GL 862 Restricted from Levy Proceeds	5,065,035		6,786,595			
GL 863 Restricted from State Proceeds	5,902,644					
GL 865 Restricted from Other Proceeds	(13,535)					
GL 866 Restricted from Impact Fees	(3,929,423)		720,476			
GL 889 Assigned to Fund Purpose	8,118,919		16,376,337			
GL 890 UnRsrvd Undsgntd Fnd Bal						
Total Ending Fund Balance	\$ 32,733,531		\$ 65,423,803			

Auburn School District No. 408
ASB Fund Budget Status
For the Month of November, 2014

	Annual Budget	Actual For Month	Total for Year	Encumb	Balance	Percent
TOTAL BEGINNING FUND BALANCE	\$ 1,090,784		\$ 1,428,831			
REVENUES AND OTHER FINANCING SOURCES						
1000 General Student Body	1,753,002	63,335	355,444		1,397,558	20.28%
2000 Athletics	243,220	6,032	93,196		150,024	38.32%
3000 Classes	254,953	10,390	37,241		217,712	14.61%
4000 Clubs	1,757,792	89,142	414,867		1,342,925	23.60%
6000 Private Moneys	102,460	4,267	10,570		91,890	10.32%
Total Revenues & Other Financing Sources	4,111,427	173,166	911,318	-	3,200,109	22.17%
EXPENDITURES						
1000 General Student Body	1,432,134	39,746	127,352	44,278	1,260,504	11.98%
2000 Athletics	328,221	50,356	93,150	34,248	200,823	38.81%
3000 Classes	264,273	6,386	20,052	18,614	225,607	14.63%
4000 Clubs	1,896,758	137,997	306,799	93,947	1,496,012	21.13%
6000 Private Moneys	103,916	1,937	3,366	-	100,550	3.24%
Total Expenditures	4,025,302	236,421	550,718	191,088	3,283,496	18.43%
Excess Revenues/Other Financing Sources Over (under) Expend. & Oth Financing Uses	86,125	(63,256)	360,599			
Total Ending Fund Balance	\$ 1,176,909		\$ 1,789,431			
Ending Fund Balance Accounts						
GL 819 Restricted for Fund Purpose	1,176,909		1,788,760			
GL840 Nonspendable-Inven/Prepaid			671			
GL 889 Assigned to Fund Purposes						
Total Ending Fund Balance	\$ 1,176,909		\$ 1,789,431			

Auburn School District No. 408
Debt Service Fund Budget Status
For the Month of November, 2014

	Annual Budget	Actual For Month	Total Year	Encumbrance	Balance	Percent
TOTAL BEGINNING FUND BALANCE	\$ 6,430,043		\$ 6,422,376			
REVENUES AND OTHER FINANCING SOURCES						
1000 Local Taxes	15,217,563	1,423,039	8,055,876		7,161,687	52.94%
2000 Local Non-Tax	48,100	3,337	6,140		41,960	12.76%
3000 State, General Purpose		-	-		-	0.00%
5000 Federal, General Purpose		-	-		-	0.00%
6000 Federal, Special Purpose		-	-		-	0.00%
9000 Other Financing Sources		-	-		-	0.00%
Total Revenues & Other Financing Sources	15,265,663	1,426,376	8,062,015		7,203,648	52.81%
EXPENDITURES						
Matured Bond Expenditures	8,795,000	-	-	-	8,795,000	0.00%
Interest on Bonds	6,808,036	-	-	-	6,808,036	0.00%
Interfund Loan Interest		-	-	-	-	0.00%
Bond Transfer Fees	100,000	-	-	-	100,000	0.00%
Arbitrage Rebate		-	-	-	-	0.00%
Underwriter's fees		-	-	-	-	0.00%
Total Expenditures	15,703,036	-	-	-	15,703,036	0.00%
Other Financing Uses		-	-			
Excess Revenues/Other Financing Sources Over (under) Expend. & Oth Financing Uses	(437,373)	1,426,376	8,062,015			
Total Ending Fund Balance	\$ 5,992,670		\$ 14,484,391			
Ending Fund Balance Accounts						
GL 810 Reserved For Other Items			-			
GL 830 Reserved For Debt Service	6,430,043		1,655,164			
GL 889 Assigned to Fund Purposes	(437,373)		12,829,227			
GL 890 UnRsrvd Undsgntd Fnd Bal			-			
Total Ending Fund Balance	\$ 5,992,670		\$ 14,484,391			

Auburn School District No. 408
Transportation Vehicle Fund Budget Status
For the Month of November, 2014

	Annual Budget	Actual For Month	Total For Year	Encumb	Balance	Percent
TOTAL BEGINNING FUND BALANCE	\$ 2,148,615		\$ 2,151,834			
REVENUES AND OTHER FINANCING SOURCES						
1000 Local Taxes	0	-	-		-	0.00%
2000 Local Non-Tax	10,768	891	1,813		8,955	16.84%
3000 State, General Purpose		-	-		-	0.00%
4000 State, Special Purpose	723,485	-	-		723,485	0.00%
5000 Federal, General Purpose		-	-		-	0.00%
8000 Revenues from Other Agencies		-	-		-	0.00%
9000 Others Financing Sources		9,230	13,573		(13,573)	0.00%
Total Revenues & Other Financing Sources	734,253	10,121	15,386	-	718,867	2.10%
EXPENDITURES						
Type 30 Equipment	2,077,290	-	-	-	2,077,290	0.00%
Total Expenditures	2,077,290	-	-	-	2,077,290	0.00%
Excess Revenues/Other Financing Sources Over (under) Expend & Oth Financing Uses	(1,343,037)	10,121	15,386			
Total Ending Fund Balance	\$ 805,578		\$ 2,167,219			
Ending Fund Balance Accounts						
GL 819 Restricted for Fund Purposes	2,148,615		1,415,645			
GL 889 Assigned to Special Fund Purposes	(2,147,747)		736,798			
GL 890 UnRsrvd Undsgntd Fnd Bal			-			
Total Ending Fund Balance	\$ 868		\$ 2,167,219			
Reconciling Difference Per Reprot	804,710					

AUBURN SCHOOL DISTRICT No. 408

ASB FUND

NOVEMBER, 2014

HIGH SCHOOLS

	Auburn High	Auburn Mountainview	Auburn Riverside	West Auburn	TOTAL
	401	405	408	504	
BEGINNING BALANCE	\$ 218,605.95	\$ 268,672.33	\$ 354,629.62	\$ 9,036.77	\$ 850,944.67
REVENUES	\$ 220,378.19	\$ 234,129.18	\$ 231,025.31	\$ 366.67	\$ 685,899.35
EXPENDITURES					
General	\$ 27,517.99	\$ 35,745.68	\$ 17,121.92	\$ -	\$ 80,385.59
Athletics	47,119.96	9,553.21	29,646.98	-	86,320.15
Classes	7,353.56	4,756.30	3,278.35	-	15,388.21
Clubs	99,041.21	83,256.05	95,830.27	-	278,127.53
Private Monies	130.70	1,361.09	1,873.82	-	3,365.61
TOTAL EXPENDITURES	\$ 181,163.42	\$ 134,672.33	\$ 147,751.34	\$ -	\$ 463,587.09
TRANSFERS					
General	\$ 1,469.30	\$ 22,946.91	\$ 12,275.51	\$ -	\$ 36,691.72
Athletics	(2,088.00)	(15,091.12)	(17,306.45)	-	(34,485.57)
Classes	(1,115.00)	-	10,269.91	-	9,154.91
Clubs	1,733.70	(7,855.79)	(5,072.97)	-	(11,195.06)
Private Monies		-	(166.00)	-	(166.00)
TOTAL TRANSFERS	\$ -	\$ -	\$ -	\$ -	\$ (0.00)
OVER/ (UNDER)	\$ 39,214.77	\$ 99,456.85	\$ 83,273.97	\$ 366.67	\$ 222,312.26
ENDING BALANCE	\$ 257,820.72	\$ 368,129.18	\$ 437,903.59	\$ 9,403.44	\$ 1,073,256.93

AUBURN SCHOOL DISTRICT No. 408

ASB FUND

NOVEMBER, 2014

MIDDLE SCHOOLS

	Cascade	Mt. Baker	Rainier	Olympic	TOTAL
	202	207	206	203	
BEGINNING BALANCE	\$ 70,318.09	\$ 55,379.27	\$ 103,268.24	\$ 102,871.70	\$ 331,837.30
REVENUES	\$ 31,125.23	\$ 43,746.98	\$ 45,307.71	\$ 21,730.26	\$ 141,910.18
EXPENDITURES					
General	\$ 1,483.93	\$ 2,960.45	\$ 4,832.64	\$ 4,492.62	\$ 13,769.64
Athletics	1,431.81	2,010.47	1,138.28	2,249.14	6,829.70
Classes	-	65.00	-	-	65.00
Clubs	5,965.62	14,013.16	7,125.17	1,567.69	28,671.64
Private Monies	-	-	-	-	-
TOTAL EXPENDITURES	\$ 8,881.36	\$ 19,049.08	\$ 13,096.09	\$ 8,309.45	\$ 49,335.98
TRANSFERS					
General	\$ 7,422.78	\$ 15,148.98	\$ 6,500.00	\$ -	\$ 29,071.76
Athletics	(6,000.00)	(7,468.77)	(6,400.00)	-	(19,868.77)
Classes	1,908.63	(2,705.14)	-	-	(796.51)
Clubs	(3,331.41)	(4,975.07)	(100.00)	-	(8,406.48)
Private Monies	-	-	-	-	-
TOTAL TRANSFERS	\$ -	0.00	0.00	\$ -	\$ (0.00)
OVER/ (UNDER)	\$ 22,243.87	\$ 24,697.90	\$ 32,211.62	\$ 13,420.81	\$ 92,574.20
ENDING BALANCE	\$ 92,561.96	\$ 80,077.17	\$ 135,479.86	\$ 116,292.51	\$ 424,411.50

AUBURN SCHOOL DISTRICT NO. 408
PRIVATE PURPOSE TRUST FUND STATEMENT
November 30, 2014

REVENUES:

InvestED \$ 14,209

Scholarship Donations:

6007 Pat Kuhlman	1,000
6103 Linda Cowan	100
6107 AHS Hanan	483
6501 Invest Ed- AHS	4,753
6502 Invest Ed - Casc	1,529
6503 Invest Ed - Oly	1,529
6505 Invest Ed - AMHS	1,851
6520 Invest Ed - RAI	650
6521 Invest Ed - WAHS	481
6527 Invest Ed - MTB	1,126
6528 Invest Ed - ARHS	2,290
7003 Pioneer Shoe Fund	800

Total Scholarship Donations	<hr/> 16,592
-----------------------------	--------------

Interest	508
Total Revenues	<hr/> 17,100

EXPENDITURES:

InvestED 9,162

6016 Auburn Community	375
6501 Invest Ed- AHS	4,725
6502 Invest Ed - Casc	415
6503 Invest Ed - Oly	816
6505 Invest Ed - AMHS	385
6520 Invest Ed - RAI	248
6527 Invest Ed - MTB	205
6528 Invest Ed - ARHS	2,368
7005 AHS Booster Club	123

Total Expenditures	<hr/> 9,660
--------------------	-------------

Excess of Revenue over (under) Expenditure 7,440

Fund Balance - Beginning of the Year	<hr/> 562,302
--------------------------------------	---------------

Fund Balance - Year to Date	<hr/> <hr/> \$ 569,742
-----------------------------	------------------------

AUBURN SCHOOL DISTRICT NO 408
NBN Employee Benefits Trust Fund Statement
November 30, 2014

ADDITIONS:

Contributions from Plan Members	\$ 70,886.00
Investment Earnings	<u>51.69</u>
Total Additions	<u>70,937.69</u>

DEDUCTIONS:

Benefits Claims	56,286.59
State Program Fees	<u>-</u>
Total Deductions	<u>56,286.59</u>

NET DEDUCTIONS	14,651.10
-----------------------	-----------

Net Assets at Beginning of Year	<u>104,161.93</u>
---------------------------------	-------------------

Net Assets Year To Date	<u><u>\$ 118,813.03</u></u>
-------------------------	-----------------------------

AUBURN SCHOOL DISTRICT NO. 408
Local Grants Received in November, 2014

Donor	Recipient	Amount
Bill & Melinda Gates Grant	ASD	\$521,833.00
Dorian Studios	Evergreen	\$38.95
Printer Cartridge Recycle	Lake View	\$20.31
TIFT (Parent)	Lea Hill	\$25.00
Farmer's Insurance	Lea Hill	\$591.97
Dorian Studios	Lea Hill	\$52.12
Herda Family	Lea Hill	\$100.00
Howard Behar Donation	Dick Scobee	\$5,000.00
US Again	Terminal Park	\$17.85
Dorian Studios	Terminal Park	\$589.22
PTA	Hazelwood	\$107.16
Dorian Studios	Lakeland	\$1,187.44
Gifts & Donations	Rainier	\$57.52
College Board	Auburn High	\$250.00
College Board	MountainView	\$500.00
WAHS	West Auburn High	\$14.21
Total		<u><u>\$530,384.75</u></u>

1. Approval of Minutes

Recommendation: That the minutes of Monday, December 8, be approved.

Recommendation: That the above-mention policy be accepted for first reading with second reading and adoption scheduled for Monday, January 12.

Recommendation: That the board approve Resolution No. 1201-Temporary Waiver from High School Graduation Requirements.

6. Executive Session

(DRAFT 12-10-14)

FAMILY ENGAGEMENT

It is the policy of the Auburn School District board of directors to encourage and support family involvement in education at home, in our schools and communities, and in school governance. The board recognizes the diversity of family structures, circumstances, and cultural backgrounds and respects families as important decision makers for their children's education. The board is committed to the creation and implementation of culturally inclusive and effective school-family partnerships throughout the school district and in each school and believes these partnerships to be critical to the success of every student. The district's family involvement efforts will be comprehensive and coordinated.

The board recognizes that family involvement in education has a positive effect on student achievement and is an important strategy in reducing achievement gaps. The intent of this policy is to create and maintain a district-wide climate conducive to the involvement of families and to develop and sustain partnerships that support student learning and positive child and youth development in all schools.

The board is committed to professional development opportunities for staff and leadership to enhance understanding of effective family involvement strategies. The board also recognizes the importance of administrative leadership in setting expectations and creating a climate conducive to school-family partnerships.

In support of the implementation of this policy, a copy will be distributed to all schools, school staff, families, teachers and community members. Further, the district will provide support and guidance to parents and teachers as they plan and implement effective family involvement efforts.

The Auburn School District board of directors supports the development, implementation, and regular evaluation of family involvement efforts that includes parents and family members at all grade levels in a variety of roles. The district will use the results of the evaluation to enhance school-family partnerships within the district.

Adoption Date:
Auburn School District
Revised:

AUBURN SCHOOL DISTRICT NO. 408

RESOLUTION NO. 1201
TEMPORARY WAIVER FROM HIGH SCHOOL GRADUATION REQUIREMENTS

WHEREAS, it is recommended by the district's on-time graduation committee that the Board of Directors submit a resolution to the Washington State Board of Education delaying the implementation of the career and college ready graduation requirements directed by Chapter 217, Laws of 2014 (E2SSB 6552); and

WHEREAS, currently the Auburn School District's graduation requirements are aligned with WAC 180-51-067, implementation would require revisions to district procedures, staffing resources to meet highly qualified requirements, and facilities.

NOW, THEREFORE, BE IT RESOLVED, the Board of Directors of the Auburn School District No. 408 hereby request, based on the extension, the requirement would go into effect for the freshman class of 2017, graduating in 2021.

ADOPTED this 22nd day of December, 2014.

AUBURN SCHOOL DISTRICT NO. 408

Secretary, Board of Directors

**Auburn School Board
Auburn School District No. 408**

TO: School Board

DRAFT

FROM: Carol Seng

DATE: December 22, 2014

SUBJECT: Board sub-committee assignments and representatives--2014-15

The work of board subcommittees (two persons) is basic to the work of the total board. It also assists the administration in planning and expediting administration processes and meeting important timelines. Representation of the school board on district, regional, and state associations provides the entire board with the contextual information.

The following board subcommittee assignments and board representatives are my recommendations for the 2014-15 year. Should you have any concerns, please contact me.

Board Subcommittee--Capital Projects—Anne Baunach and Laurie Bishop

Board Subcommittee--Certificated Negotiations--Ray Vefik and Carol Seng

Board Subcommittee--Classified Negotiations—Ryan Van Quill and Anne Baunach

Board Subcommittee--Board Policy—Ray Vefik and Ryan Van Quill

Board Subcommittee--Gold Star—Laurie Bishop and Ryan Van Quill

Board Subcommittee--Student Achievement—Anne Baunach and Carol Seng

Board Subcommittee--Technology--Ray Vefik and Anne Baunach

Representatives--WSSDA Legislative Representative—Carol Seng

Representatives—WSSDA Rep to OSPI TAC--Ray Vefik

Representatives--WIAA—Laurie Bishop

Representatives--Auburn Citizens for Schools—Ryan Van Quill

Representatives--Auburn Council of PTAs--Laurie Bishop

Representatives--Auburn Public Schools Foundation—Ray Vefik

Representatives--Cities and Schools—Carol Seng

rj

Copy to: Kip Herren
Mike Newman
Tim Cummings
Ryan Foster

Rod Luke
Heidi Harris
Rhonda Larson

Jeff Grose
Vicki Alonzo
Debbie Strand

:COMMITTEE ASSIGNMENTS2014-15